



Shire of Ngaanyatjarra

ON A JOURNEY

ANNUAL GENERAL MEETING OF ELECTORS

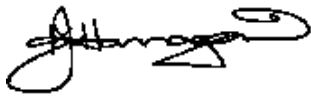
UNCONFIRMED MINUTES & ATTACHMENTS

**Tjulyuru Cultural and Civic Centre
Warburton Community**

**22 February 2023
1.00 pm**

SHIRE OF NGAANYATJARRAKU
ANNUAL GENERAL MEETING OF ELECTORS

The Chief Executive Officer recommends the endorsement of these minutes at the next Annual General Meeting of Electors.



Chief Executive Officer

Date: 22-2-2023

These minutes were confirmed by Council as a true and correct record of proceedings of the Annual General Meeting of Electors held on the 22 February 2022.

Presiding Member _____ **Date:**..

1. DECLARATION OF OPENING

The Presiding Member declared the meeting open at 1.00 pm.

2. ANNOUNCEMENT OF VISITORS

The Presiding Member welcomed members of the public to the gallery.

3. ATTENDANCE

3.1 PRESENT

Elected Members:	President Deputy President Councilor Councillor Councilor	D McLean D Frazer (phone approval given 21/2/23) J Frazer (phone approval given 21/2/23) J Porter A Jones
Staff:	CEO CFO AC DGC GMO	K Hannagan K Fisher (via video-conference) S Richardson C Green (via video-conference) D Mosel (via video-conference)
Guests:	Nil	
Members of Public:	There were no members of the public in attendance at the commencement of the meeting.	

3.2 APOLOGIES

Cr. L West

4. CONFIRMATION OF MINUTES OF PREVIOUS MEETING

4.1 MINUTES OF AGM OF ELECTORS 2020/21

Officers Recommendation and Council Resolution

Moved: Cr J Porter Seconded: Cr A Jones

That the Unconfirmed Minutes of the AGM of Electors held on 15 December 2021 at the Council Chambers, Tjulyuru Cultural and Civic Centre, Warburton Community (as circulated and available on the Shires official website) be confirmed as a true and accurate record.

Carried: 5/0

5. PRESENTATION OF REPORTS FOR 2021/22

5.1 PRESIDENTS REPORT

President, Cr D McLean presented the Presidents Report for the period ending 30th June 2022.

5.2 CHIEF EXECUTIVE OFFICERS REPORT

CEO, K Hannagan presented the Chief Executive Officers Report for the period ending 30th June 2022.

5.3 AUDITORS REPORT

CEO, K Hannagan presented the Audit Report for the period ending 30th June 2022.

5.4 FINANCIAL REPORT

CEO, K Hannagan presented the Financial Report and Statements for the period ending 30th June 2022.

Attachments

Annual Report 2021/22, also available at the Shire Office, Warburton, on the Shire Website and was also available at the meeting.

Voting Requirement

Simple Majority

Officers Recommendation and Council Resolution

Moved: Cr A Jones Seconded: Cr D Frazer

That Council receives the foregoing 2021/22 Annual Reports and Financial Statements.

Carried: 5/0

7. NEW BUSINESS OF AN URGENT NATURE AS ADMITTED BY DECISION

8. CLOSURE OF MEETING

There being no further business to discuss the Presiding Member closed the meeting at 1.02 pm.

Annual Report for the year ended 30 June 2022



Shire of **Ngaanyatjarra**
ON A JOURNEY



INDEX

Vision Statement	2
President's Foreword	3
Message from the CEO	5
Council member information (including meetings attended)	6
Shire Snapshot	6
Organisation Structure	8
Planning & Reporting	9
Statutory Reports	11
Financials	13

Our Vision

The Shire of Ngaanyatjaraku – on a journey

During 2021/22 the shire undertook a full review of its Workforce Plan that was adopted in Jun 2022. A desktop review of the remaining Integrated Planning and Reporting (IPR) Framework suite of documents, including the Plan for the Future (including the Strategic Community Plan (no changes) and Corporate Business Plan (minor changes to Actions)), Strategic Resource Plan (including Long Term Financial Plan and Asset Management Plan) were adopted in July 2022. These plans shape the services the Shire of Ngaanyatjaraku will deliver over the next ten years and has been developed with our community's aspirations and needs at its heart.

It is apparent from the results of the community engagement process that there is an expectation for the Shire to provide a wide range of social services, when in fact the Shire doesn't have the resources to do this. Limited social services are provided by either the Ngaanyatjarra Council Aboriginal Corporation and / or State or Federal agencies or are not provided at all. Nonetheless, the Shire has a significant role to play in advocating for the provision of resources to provide basic services to the community.

The Shire has no freehold land and all social housing is owned and managed by the State Government, who are exempt from normal Shire Rating or the ability to charge Fees for Services such as Waste Management. As such, the Shire has limited capacity to raise income and is dependent upon State and Federal Grants to provide service delivery. Many of these grants are tied to specific purposes which limits the range of services the Shire can provide. The Shire receives adequate grants for the maintenance and renewal of the Shires' Road network and this connectivity is highly valued by the people of the lands as they travel the lands for social and cultural reasons.

The Plan for the Future provides a valuable management tool to allow the Shire to maintain focus on its primary role as a provider and manager of infrastructure, advocate for better social service provision and where capacity allows, to provide a limited range of social services to compliment services provided by others.



President's Foreword

The Shire of Ngaanyatjaraku has been working toward achieving the aspirations of the community as identified within our Plan for the Future. Provision of financially sustainable services and infrastructure and the creation of opportunities to realise these goals, continue to be the prime focus of the Council. As such, it gives me great pleasure to present the Annual Report for the Shire of Ngaanyatjaraku for the 2021-2022 financial year.

The Shire has made considerable achievements in line with its strategic goals and our key IPRF Actions. As such, I am pleased to report that the shire's financial position is improving with the Shire achieving a surplus in 2021-2022 and a balanced budget has been adopted for 2022-2023. This has only been achieved by reducing services to the community in previous years, and hopefully this will be short term until the Shires advocacy for service provision by other levels of government can be resolved.

In 2020 the Minister for Local Government; Culture and the Arts initiated a Lands Service Review in response to the Shires advice that the Shire of Ngaanyatjaraku for some years now has been experiencing disadvantage from structural change when the Federal Government handed responsibility for aboriginal communities to the State Government. It is the Shires view that the states response in handling the changes in service delivery appear to be inconsistent across the regions of WA. The Shire has made progress on improved services as follows:

- Swimming Pools, the Shires advocacy for funding to maintain the three community owned swimming pools has resulted in the Department of Communities funding NCAC \$2 million p.a. for the next three years to maintain the pools;
- Fire & Emergency Services, the Warburton Community Council's aspiration to establish a fire response service in Warburton has been achieved through negotiation by the Shire to establish a Volunteer Bushfire Brigade with firefighting equipment and training supplied by DFES. DFES have also appointed a Chief Bushfire Officer to assist with the operation of the service, managed by the Shire entering into a Memorandum of Understanding with DFES.
- The Shire has lobbied for and achieved from the Department of Communities to upgrade a number of community water filtration plants with the Warburton underground pipes in the roads to be replaced. The Shire is ensuring that all roads are reinstated to ensure the community is not left with a poor road network.
- Waste Management, the Shires continued lobbying the State for services comparable to Kimberley and Pilbara remote aboriginal communities has seen the State make an offer of funding towards waste services for the six main communities. The State has requested the Shire to also make a funding contribution. This contribution has been modelled into the Shires Long Term Financial Plan and will result in exhausting the Shire's cash reserves in 8-10 years' time. The Shire is looking at alternative measures to try and ensure this does not happen.
- Early Years Child Development, The National Indigenous Australians Agency has undertaken a review of services across the lands. This work stalled due to the Covid19 Pandemic; the Shire has continued to lobby the NIAA to consider implementing recommendations in the review report. We have been advised this will happen in the second half of 2022.
- Recreation Services, as requested the Shire completed a Shire wide Sport & Recreation Plan but the State is reluctant to commit large funding \$ to local government to provide these services. The State have suggested alternative funding bodies for Capex funding and to partner with an aboriginal corporation (e.g. NCAC) who they might consider funding for a small scale pilot project. This is being progressed with NCAC.

The Shire has been successful in gaining additional road funding as follows:

- The Aboriginal Roads Access Committee have accepted the Shires submission to reinstate maintenance funding of \$60,000 p.a. for Patjarr Road. The Shire has also budgeted from its FAGs Roads capital funding in the financial year to improve the top end of the road at a cost of up to \$250,000.
- The Shire gained three competitive grants of \$300,000 (total \$900,000) from Main Roads WA NORA funding for improvement works on Wanarn, Tjirrkarli and Papulankutja Roads.
- Federal Stimulus Funding (LRCIP) of \$347,959 was also gained and spent on Papulankutja Road upgrades. The Shire has been focusing on upgrading of this road between Jameson and Warburton to encourage access via this route rather than use the Mantamaru Road which now has heavy vehicles on it from the OZ Minerals, West Musgrave project,

I would like to thank our Deputy Shire Presidents, Cr. Andrew Jones (to October 2021) and Cr Preston Thomas (from October 2021) for their assistance and acknowledge that the support of my fellow Councillors over the last twelve months has been great. I would also like to thank all the Shire staff members for their efforts and dedication to the Shire of Ngaanyatjaraku.

Cr. John Damian McLean
PRESIDENT



Message from Chief Executive Officer

The Shire has been working through the Actions contained in the Plan for the Future. The Presidents Report contains a number of updates related to service issues the Shire is trying to improve for the community.

The Shires Road network is fully dependent on Federal, and State Government Grants and we are thankful that at this point in time we receive enough funding to maintain and renew our road network in accordance with Shires Asset Management Plan. Of concern has been the recent very high inflation rates that will impact next years Fair Valuation of Assets. The Shires Long Term Financial Plan has identified that in future years the Shire may not be able to meet the renewal requirements identified in the asset Management Plan. As such over the next twelve months work will need to be done to review these strategic documents and develop strategies to ensure the financial sustainability of the Shire going forward.

The Shire has recorded a financial surplus for the 2021/22 Financial Year End, mainly due to a large proportion of the Federal Financial Assistance Grants for 2022/23 being paid in advance. Other factors included savings from staff vacancies, and project funding being carried forward to the next financial year. The Shire has adopted a balanced budget for FYE 2022/23, which includes funding for several Strategic Service Plans.

The approval of the OZ Minerals, West Musgrave mine will have a major impact on the Shires Road network and associated users of the route to / from the mine site. As such the Shire has been negotiating the following with OZ Minerals:

- Creation of a WALGA Roadwise Group, to consider road safety matters with heavy vehicles on the route, of high priority is community education.
- Development of a Maintenance Agreement for affected roads during the initial construction phase and later when production commences.
- Development of a plan for road upgrades along the affected network.

Shire Officers are also working with Main Roads WA on design plans for the gravel Warburton Heavy Vehicle Bypass and upgrading to a sealed standard of the Great Central Road into Warburton with improved access to the Warburton Roadhouse. The Shire has also progressed the Warburton Concept Plan to improve the Roadhouse and Shire Office surroundings to make the entrance into Warburton more appealing and hopefully an increased visitor experience encouraging more people to stay at the roadhouse overnight. The next stage will require more detailed involvement of the local community in future governance arrangements to progress the project to fruition.

The Shire acknowledges the Federal & State Agencies who provide road funding grant programs such as Local Roads and Community Infrastructure Program, Roads to Recovery, Aboriginal Access Roads, Main Roads WA Regional Road Group and Direct Grants that contribute towards the Shire maintaining its road network connecting remote communities and support locations.

The 2021/22 FYE has been another especially challenging year for the Local Government industry and none more so than our Shire. The global Covid19 pandemic has kept the Shire isolated during much of the pandemic. Whilst this has impacted the morale of staff, the shire has been generally able to provide services, business as usual.

I would like to thank staff at the Shire for their hard work and support during a year of major change during a pandemic, and the Elected Members for their dedication to ensuring the Shire maintains financial sustainability whilst trying to address service provision for the future.

Kevin Hannagan
Chief Executive Officer

Council member information

Councillors have a specific role in relation to developing the local government's vision and long-term goal setting with appropriate key performance indicators (KPIs). These are responsibilities that require specific skills and experience.

The Shire's eight Councillors (7 aboriginal) facilitate the development and implementation of our community's aspirations and goals. The Councillors meet monthly to discuss issues and imperative areas arising in the community along with general council matters.

Number of Meetings	Council 11 Special 1 AGM 1 Committee 6	Council 11 Special 1 AGM 1 Committee 6	
Name	Name	Name	
Title	Title	Title	
	Meetings attended	Meetings attended	
Mr (John) Damian McLean PRESIDENT	11, 1, 1, 6	Mr Preston Thomas COUNCILLOR DEPUTY PRESIDENT Oct -	5, 0, 1, 3
Mr Andrew Jones DEPUTY PRESIDENT July – Sep COUNCILLOR Oct -	7, 1, 1, 4	Ms Joylene Frazer COUNCILLOR	10, 1, 1, 5
Ms Lalla West COUNCILLOR	11, 1, 1, 6	Mrs Julie Porter COUNCILLOR	11, 1, 1, 6
Ms Debra Frazer COUNCILLOR	9, 1, 1, 6	Vacant COUNCILLOR July – Sep & May -	
Mr Alwyn Bates COUNCILLOR Jul - Sep	0, 0, 0, 0	Mr Alex Benning COUNCILLOR Nov - May	2, 0, 0, 2

Shire snapshot

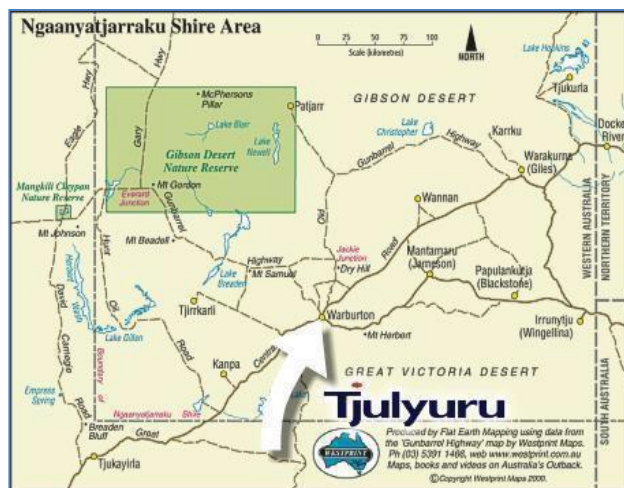
The Shire of Ngaanyatjaraku is responsible for the provision of "mainstream" local government and delivery of services to the ten communities and visitors within its boundaries.

The Shire encompasses an area of 159,948 square kilometres and is located approximately 1,542km from Perth. The region itself is diverse in natural beauty from the magnificent Rawlinson ranges to the red sandy plains of the Gibson Desert.

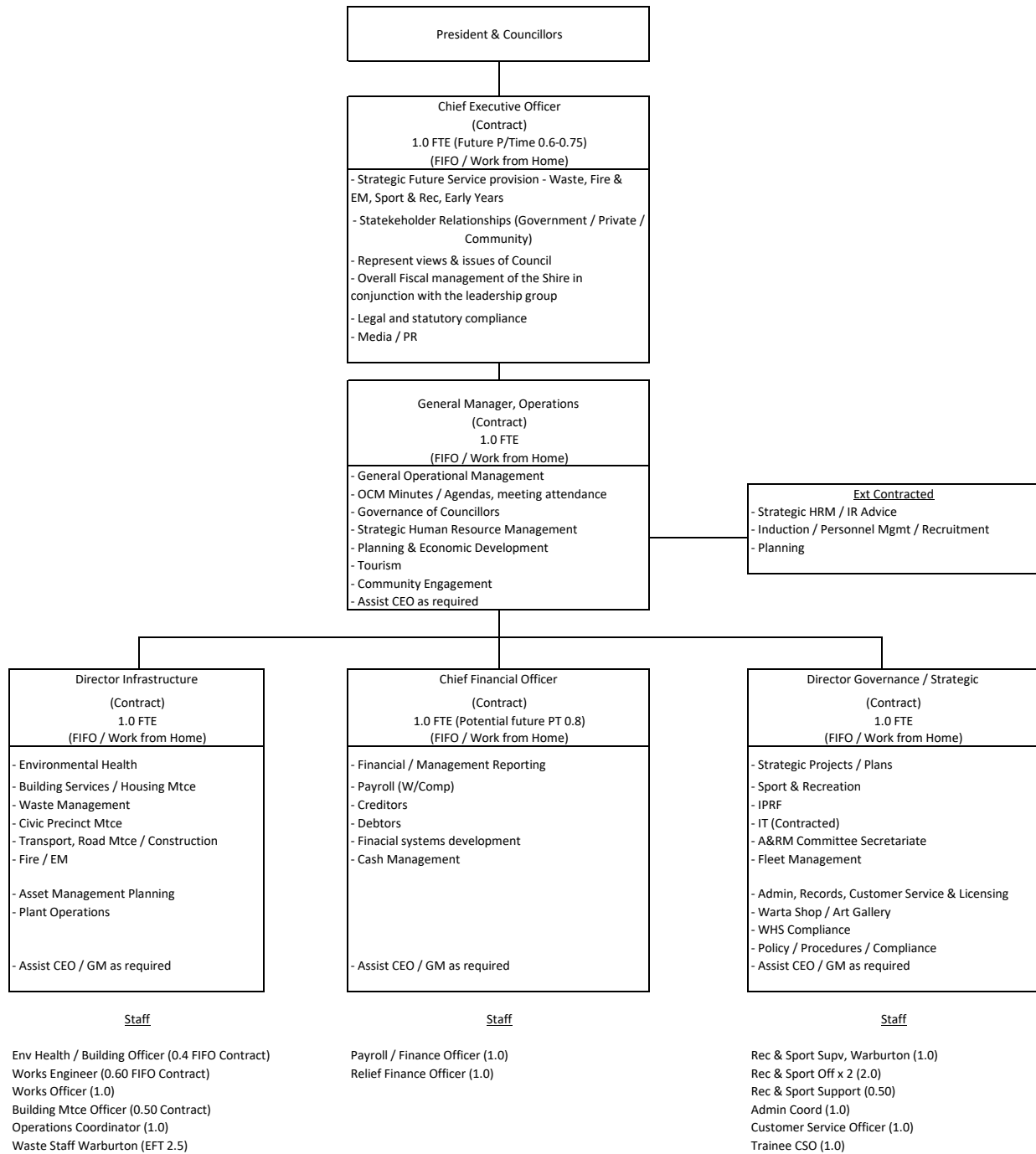
The Shire is a unique local government in that its community of interest is contained within the traditional lands of the Ngaanyatjarra people of the Central Desert of Western Australia. The 99-year leases held by the Ngaanyatjarra Land Council on behalf of the traditional owners also form the boundaries of the Shire of Ngaanyatjaraku.

The Shire's main township is Warburton, which is also the largest of the 10 Indigenous communities within the Shire. Warburton is positioned 1,542kms north-east of Perth, 560kms of gravel road north-east of Laverton, 750kms north-east of Kalgoorlie and 1,050kms south-west of Alice Springs. Neighbouring shires include the Shire of Wiluna, Laverton, and East Pilbara. The Shire offices are located in the Tjulyuru Cultural and Civic Centre in Warburton.

In the 2020 the Shire had an estimated residential population of 1,797 people, comprised of 49% male and 51% female residents and there are approximately 519 residential dwellings within the Shire. The Shire has a higher percentage of residents aged between 0-29 years and a lower proportion of residents aged 65+ years compared with the wider Australian population.



Organisational Structure, 1 July 2022



Planning & Reporting

In 2011, the Department of Local Government introduced the Integrated Planning and Reporting Framework to encourage a movement towards best practice strategic planning and reporting standards across the Western Australian local government industry.

The Shire of Ngaanyatjaraku is building on a successful history of community engagement to ensure that the community can grow and thrive as a vibrant and attractive place to live, work and visit.

Developing our aspirations and plans for the future will shape the delivery of services to the community and the direction of economic development. This integration of community aspiration and service delivery is called the Integrated Planning and Reporting Framework (IPR). This will ensure that the Shire of Ngaanyatjaraku's policies and services are aligned to the community's aspirations.

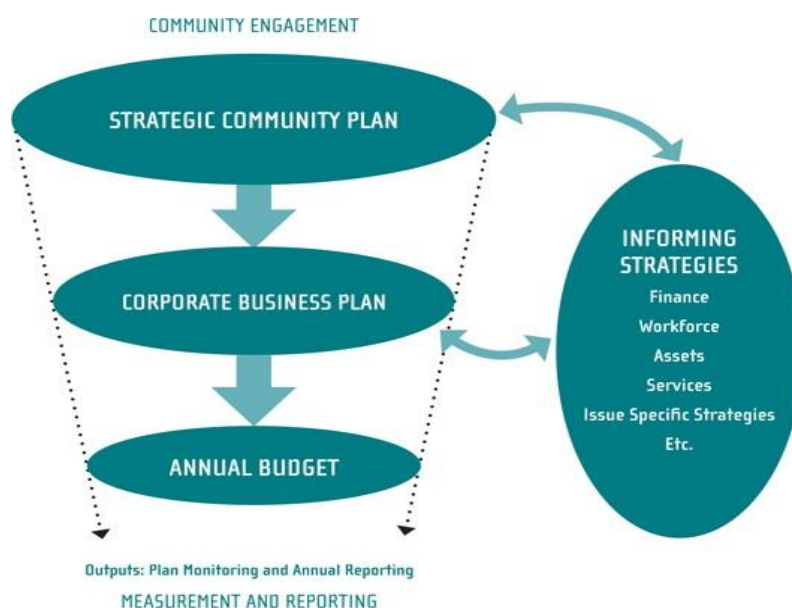
The process, driven by the 10-year Strategic Community Plan will create a 4-year Corporate Business Plan to ensure that we deliver the community's aspirations. This will:

- Strengthen our council's strategic focus; and
- Streamline our reporting processes.

This Strategic Community Plan, which represents the needs and aspirations of the community, has been developed by the Shire's Councillors and sets out the vision for the next 10 years.

The task of turning this vision into a reality rest with Shire's Administration function. They will set out how this will be achieved in a 4-year Corporate Business Plan ("CBP").

Alongside the CBP, the Shire has created a 15-year Long-Term Financial Plan and a 20-year Asset Management Plan and a 4-year Workforce Plan which will set out the resources needed to deliver the CBP. Copies of all plans are available on the Shires website.



IPR, Measuring and Reporting Framework

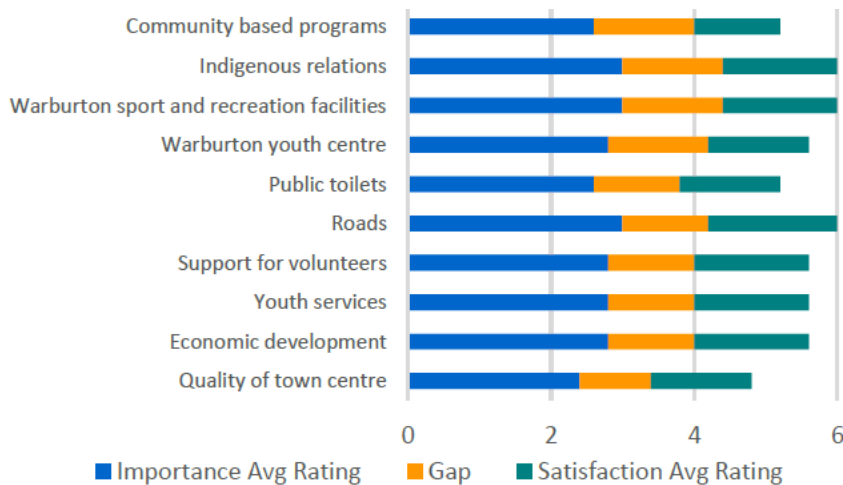
Aspirations and Values

Our community has identified the following aspirations and values:

- Safe, healthy and happy communities;
- Retain our special sense of family culture and living on this beautiful land;
- Strong sense of community and culture;

- Encouraging greater engagement of the younger demographic in local activities; and
- Active healthy community sporting, arts and cultural programs;

Through the survey, respondents rated their perspective of the importance and their level of satisfaction with current and anticipated Shire services, facilities and support. The chart below reflects the ten areas with the largest gap, shown in yellow, between the average importance ratings (shown in blue) of the Shire services and average satisfaction rating (shown in green) of the same service.



Of note, essential to our communities are the provision of community owned swimming pools (managed by NCAC), as these provide significant benefits in relation to health, recreation and social wellbeing. Road access is also essential, with the majority of roads being gravel, requiring maintenance at adequate levels of service. With minimal income from a small mining tenement rate base, and no GRV ratepayers, the support of the State and Federal governments is essential to providing these services.

Strategic Objectives

The following three key strategic objectives highlight our focus, in reflection of our communities hopes for the future.

- Our People: Looking after our people - our communities are healthy, happy and informed
- Our Land: Looking after our land - which we all depend upon and love living on, and want to keep good for our children and grandchildren; and
- Our Leadership: Showing the way for our communities - doing the right things to look after our people and land.

Development of the local economy, whilst not a key strategic focus due to being outside the Shire's responsibility and control, is of keen interest and the Shire will support, where possible, initiatives supporting the local economy. We will continue to work closely with State and Federal Government agencies and our traditional partner, Ngaanyatjarra Council to deliver services across the Ngaanyatjarra Lands (Lands).

Progress

The above President's report gives an update on progress against key actions contained within the Corporate Business Plan component of the Plan for the Future.

Quarterly progress reports of the Corporate Business Plan above Strategic Objectives and Actions are reported quarterly to Council and copies are available in the minutes section of the Shire website at <https://ngaanyatjarraku.wa.gov.au/index.php/our-shire/minutes-agendas>

Statutory Reports

As a local government authority, the Shire is required to comply with a number of statutory regulations.

PAYMENT TO EMPLOYEES

In accordance with section 5.53 (2)(g) of the *Local Government Act* 1995 and the Local Government (Administration) Regulations 1996 reg. 19B, the following information is provided in relation to annual salary, remuneration and allowances (Total Remuneration Package) over \$130,000 paid to employees during the 2021-22 financial year:

TRP Range (\$)	No. of Employees
140,000 – 149,999	1
170,000 – 179,999	1
180,000 – 189,999	2
200,000 -209,999	1
240,000 – 249,999	1

DISABILITY ACCESS AND INCLUSION PLAN

In accordance with Section 29 of the Disability Service Act 1993, Local Governments are required to report annually with regard to their Disability Access and Inclusion Plan and provide details addressing the plan's key outcomes within the Annual Report. For 2020-21 the Shire of Ngaanyatjarraku reports as follows:

Key Outcomes:

1. People with disability have the same opportunities as other people to access the services of, and any events organised by, the relevant public authority.
2. People with disability have the same opportunities as other people to access the buildings and other facilities of the relevant public authority.
3. People with disability receive information from the relevant public authority in a format that will enable them to access the information as readily as other people are able to access it.
4. People with disability receive the same level and quality of service from the staff of the relevant public authority.
5. People with disability have the same opportunities as other people to make complaints to the relevant public authority.
6. People with disability have the same opportunities as other people to participate in any public consultation by the relevant public authority.
7. People with disability have the same opportunities as other people to obtain and maintain employment with a public authority.

The Shire of Ngaanyatjarraku continues to ensure that the above key outcomes are addressed in order to meet the needs of people with disabilities.

The Shire of Ngaanyatjarraku Disability Access and Inclusion Plan 2019-2022 (DAIP) was reviewed by Council in 2019 and subsequently accepted by the Department of Communities.

COMPETITIVE NEUTRALITY

The Shire of Ngaanyatjarraku is classified as a Category 1 Local Government under the National Competition Policy. This principle deals with ensuring that government business operations have no advantage or disadvantage in comparison with the private sector.

The policy dictates that competitive neutrality should apply to all business activities which generate a user pays income of over \$200,000 unless it can be shown that it is not in the public interest. In this regard, no significant new business activities for the purposes of competitive neutrality were initiated or considered during the year and no noncompliance allegations were made.

FREEDOM OF INFORMATION

The Shire of Ngaanyatjarraku has a Freedom of Information (FOI) Statement prepared in accordance with the Freedom of Information Act 1992 which is available on the Shire website. It outlines the Shire's functions, the kind of documents held and how the documents can be accessed. There were no Freedom of Information applications or requests received during the 2021-22 reporting year.

RECORD KEEPING PLAN

The Shire of Ngaanyatjarraku has prepared a record keeping plan as required by the State Records Act 2000, and the Shire is committed to ensuring its record keeping practices comply with legislation. This plan was submitted to the SRO in October 2021 and approved by the State Records Commission at its meeting held on 16 November 2021 for a five-year period to 16 November 2026.

Under section 60 of the State Records Act, the State Records Commission monitors the operation of and compliance with the Act and it is a requirement for every local government to comply with the Commission's Standard 2, Principle 6 in an appropriate section within its Annual Report. Accordingly, the Shire reports as follows:

1. The Shire accesses an on-line record keeping training program that allows staff to familiarize themselves with and be aware of their record keeping responsibilities, and to ensure that the record keeping system is being operated in accordance with the revised Shire of Ngaanyatjarraku Record Keeping Plan. Given the very remote and isolated location of this Shire, online record keeping training provides on-site training and advice.
2. The efficiency and effectiveness of the record keeping training program will be reviewed on an ongoing basis and subsequently actioned to ensure its currency and relevance.
3. The Shire's record keeping induction program is continually improving to ensure employee roles and responsibilities are promoted in accordance and compliance with the Shire of Ngaanyatjarraku Record Keeping Plan.

OFFICIAL CONDUCT – COMPLAINTS REGISTER

Pursuant to section 5.121 of the *Local Government Act* 1995, a complaints register has been maintained. As at the 30th June 2022 no complaint had been received, and therefore accordingly there has been no action required to deal with complaints.



Jackie Kurltjunyinta Giles (Dec.) 2008 'Tjamu Tjamu'

SHIRE OF NGAANYATJARRAKU
FINANCIAL REPORT
FOR THE YEAR ENDED 30 JUNE 2022

Certification of Financial Report	2
Statement of Comprehensive Income by Nature or Type	3
Statement of Financial Position	4
Statement of Changes in Equity	5
Statement of Cash Flows	6
Rate Setting Statement	7
Index of Notes to the Financial Report	8
Independent Auditor's Report	41

The Shire of Ngaanyatjarraku conducts the operations of a local government with the following community vision:

The Shire of Ngaanyatjarraku - On a journey

Our Land - Looking after our Land

Our People - Looking after our People

Leadership - Showing the way for our Community

Principal place of business:

Great Central Road

Warburton Aboriginal Community

Western Australia



**SHIRE OF NGAANYATJARRAKU
FINANCIAL REPORT
FOR THE YEAR ENDED 30 JUNE 2022**

The attached financial report of the Shire of Ngaanyatjarraku for the financial year ended 30 June 2022 is based on proper accounts and records to present fairly the financial position of the Shire of Ngaanyatjarraku at 30 June 2022 and the results of the operations for the financial year then ended in accordance with the *Local Government Act 1995* and, to the extent that they are not inconsistent with the Act, the Australian Accounting Standards.

Signed on the 15th day of December 2022



Chief Executive Officer

Kevin Hannagan

Name of Chief Executive Officer



SHIRE OF NGAANYATJARRAKU
STATEMENT OF COMPREHENSIVE INCOME
BY NATURE OR TYPE
FOR THE YEAR ENDED 30 JUNE 2022

	NOTE	2022 Actual \$	2022 Budget \$	2021 Actual \$
Revenue				
Rates	21(a),2(a)	227,544	189,482	172,589
Operating grants, subsidies and contributions	2(a)	6,608,691	4,147,035	5,949,564
Fees and charges	20(c),2(a)	612,136	433,290	543,481
Interest earnings	2(a)	23,159	25,150	33,982
Other revenue	2(a)	274,053	27,426	118,401
		7,745,583	4,822,383	6,818,017
Expenses				
Employee costs		(2,083,440)	(2,663,915)	(1,767,951)
Materials and contracts		(1,625,724)	(3,289,440)	(2,077,909)
Utility charges		(45,244)	(64,550)	(33,657)
Depreciation	10(a)	(1,822,333)	(1,794,452)	(1,642,048)
Insurance		(131,413)	(132,163)	(108,928)
Other expenditure	2(b)	(52,092)	(78,740)	(24,679)
		(5,760,246)	(8,023,260)	(5,655,172)
		1,985,337	(3,200,877)	1,162,845
Capital grants, subsidies and contributions	2(a)	4,066,023	4,395,093	2,472,913
Profit on asset disposals	10(b)	76,471	15,000	60,572
Loss on asset disposals	10(b)	(7,226)	0	(21,610)
Fair value adjustments to financial assets at fair value through profit or loss		1,998	0	0
		4,137,266	4,410,093	2,511,875
Net result for the period	20(b)	6,122,603	1,209,216	3,674,720
Other comprehensive income for the period				
<i>Items that will not be reclassified subsequently to profit or loss</i>				
Changes in asset revaluation surplus	14	5,901,486	0	0
Total other comprehensive income for the period	14	5,901,486	0	0
Total comprehensive income for the period		12,024,089	1,209,216	3,674,720

This statement is to be read in conjunction with the accompanying notes.



SHIRE OF NGAANYATJARRAKU
STATEMENT OF FINANCIAL POSITION
AS AT 30 JUNE 2022

	NOTE	2022 \$	2021 \$
CURRENT ASSETS			
Cash and cash equivalents	3	2,210,100	10,059,898
Trade and other receivables	5	619,300	41,312
Other financial assets	4(a)	9,077,576	0
Inventories	6	46,299	57,029
Other assets	7	0	13,600
TOTAL CURRENT ASSETS		11,953,275	10,171,839
NON-CURRENT ASSETS			
Other financial assets	4(b)	38,901	36,903
Property, plant and equipment	8	13,143,681	7,424,104
Infrastructure	9	110,474,172	106,438,593
TOTAL NON-CURRENT ASSETS		123,656,754	113,899,600
TOTAL ASSETS		135,610,029	124,071,439
CURRENT LIABILITIES			
Trade and other payables	11	440,447	452,494
Other liabilities	12	952,376	1,504,253
Employee related provisions	13	272,201	203,536
TOTAL CURRENT LIABILITIES		1,665,024	2,160,283
NON-CURRENT LIABILITIES			
Employee related provisions	13	23,551	13,791
TOTAL NON-CURRENT LIABILITIES		23,551	13,791
TOTAL LIABILITIES		1,688,575	2,174,074
NET ASSETS		133,921,454	121,897,365
EQUITY			
Retained surplus		69,175,165	63,767,642
Reserve accounts	23	5,577,216	4,862,136
Revaluation surplus	14	59,169,073	53,267,587
TOTAL EQUITY		133,921,454	121,897,365

This statement is to be read in conjunction with the accompanying notes.



SHIRE OF NGAANYATJARRAKU
STATEMENT OF CHANGES IN EQUITY
FOR THE YEAR ENDED 30 JUNE 2022

	NOTE	RETAINED SURPLUS \$	RESERVE ACCOUNTS \$	REVALUATION SURPLUS \$	TOTAL EQUITY \$
Balance as at 1 July 2020		61,116,185	3,838,873	53,267,587	118,222,645
Comprehensive income for the period					
Net result for the period		3,674,720	0	0	3,674,720
Total comprehensive income for the period		3,674,720	0	0	3,674,720
Transfers to reserves	23	(1,023,263)	1,023,263	0	0
Balance as at 30 June 2021		63,767,642	4,862,136	53,267,587	121,897,365
Comprehensive income for the period					
Net result for the period		6,122,603	0	0	6,122,603
Other comprehensive income for the period	14	0	0	5,901,486	5,901,486
Total comprehensive income for the period		6,122,603	0	5,901,486	12,024,089
Transfers to reserves	23	(715,080)	715,080	0	0
Balance as at 30 June 2022		69,175,165	5,577,216	59,169,073	133,921,454

This statement is to be read in conjunction with the accompanying notes.



SHIRE OF NGAANYATJARRAKU
STATEMENT OF CASH FLOWS
FOR THE YEAR ENDED 30 JUNE 2022

	NOTE	2022 Actual \$	2022 Budget \$	2021 Actual \$
CASH FLOWS FROM OPERATING ACTIVITIES				
Receipts				
Rates		215,509	189,482	177,422
Operating grants, subsidies and contributions		5,521,615	4,147,035	7,129,165
Fees and charges		612,136	433,290	543,481
Interest received		23,159	25,150	33,982
Goods and services tax received		742,294	0	23,462
Other revenue		274,053	27,426	118,401
		7,388,766	4,822,383	8,025,913
Payments				
Employee costs		(2,031,215)	(2,663,915)	(1,679,619)
Materials and contracts		(1,590,794)	(3,287,940)	(1,868,669)
Utility charges		(45,244)	(64,550)	(33,657)
Finance costs		0	(1,500)	0
Insurance paid		(131,413)	(132,163)	(108,928)
Goods and services tax paid		(769,495)	0	0
Other expenditure		(52,092)	(78,740)	(24,679)
		(4,620,253)	(6,228,808)	(3,715,552)
Net cash provided by (used in) operating activities	15(b)	2,768,513	(1,406,425)	4,310,361
CASH FLOWS FROM INVESTING ACTIVITIES				
Payments for purchase of property, plant & equipment	8(a)	(184,821)	(629,000)	(227,636)
Payments for construction of infrastructure	9(a)	(5,508,755)	(5,484,802)	(3,489,396)
Non-operating grants, subsidies and contributions		4,066,023	4,395,093	2,472,913
Proceeds from financial assets at amortised cost		(9,077,576)		
Proceeds from financial assets at fair values through profit and loss		0		(1,869)
Proceeds from sale of property, plant & equipment	10(b)	86,818	75,000	92,954
Net cash provided by (used in) investing activities		(10,618,311)	(1,643,709)	(1,153,034)
Net increase (decrease) in cash held		(7,849,798)	(3,050,134)	3,157,327
Cash at beginning of year		10,059,898	10,059,898	6,902,571
Cash and cash equivalents at the end of the year	15(a)	2,210,100	7,009,764	10,059,898

This statement is to be read in conjunction with the accompanying notes.



SHIRE OF NGAANYATJARRAKU
RATE SETTING STATEMENT
FOR THE YEAR ENDED 30 JUNE 2022

	NOTE	2022 Actual \$	2022 Budget \$	2021 Actual \$
NET CURRENT ASSETS - At start of financial year - surplus/(deficit)	22(b)	3,149,420	3,151,790	2,525,774
OPERATING ACTIVITIES				
Revenue from operating activities (excluding general rate)				
Operating grants, subsidies and contributions		6,608,691	4,147,035	5,949,564
Fees and charges		612,136	433,290	543,481
Interest earnings		23,159	25,150	33,982
Other revenue		274,053	27,426	118,401
Profit on asset disposals	10(b)	76,471	15,000	60,572
Fair value adjustments to financial assets at fair value through profit or loss		1,998	0	0
		7,596,508	4,647,901	6,706,000
Expenditure from operating activities				
Employee costs		(2,083,440)	(2,663,915)	(1,767,951)
Materials and contracts		(1,625,724)	(3,289,440)	(2,077,909)
Utility charges		(45,244)	(64,550)	(33,657)
Depreciation		(1,822,333)	(1,794,452)	(1,642,048)
Insurance		(131,413)	(132,163)	(108,928)
Other expenditure		(52,092)	(78,740)	(24,679)
Loss on asset disposals	10(b)	(7,226)	0	(21,610)
		(5,767,472)	(8,023,260)	(5,676,782)
Non-cash amounts excluded from operating activities	22(a)	1,760,850	1,779,452	1,596,267
Amount attributable to operating activities		3,589,886	(1,595,907)	2,625,485
INVESTING ACTIVITIES				
Non-operating grants, subsidies and contributions		4,066,023	4,395,093	2,472,913
Proceeds from disposal of assets	10(b)	86,818	75,000	92,954
Purchase of property, plant and equipment	8(a)	(184,821)	(629,000)	(227,636)
Purchase and construction of infrastructure	9(a)	(5,508,755)	(5,484,802)	(3,489,396)
		(1,540,735)	(1,643,709)	(1,151,165)
Amount attributable to investing activities		(1,540,735)	(1,643,709)	(1,151,165)
FINANCING ACTIVITIES				
Transfers to reserves (restricted assets)	23	(715,080)	(101,656)	(1,023,263)
Amount attributable to financing activities		(715,080)	(101,656)	(1,023,263)
Surplus/(deficit) before imposition of general rates		4,483,491	(189,482)	2,976,831
Total amount raised from general rates	21(a)	227,544	189,482	172,589
Surplus/(deficit) after imposition of general rates	22(b)	4,711,035	0	3,149,420

This statement is to be read in conjunction with the accompanying notes.



SHIRE OF NGAANYATJARRAKU
FOR THE YEAR ENDED 30 JUNE 2022
INDEX OF NOTES TO THE FINANCIAL REPORT

Note 1	Basis of Preparation	9
Note 2	Revenue and Expenses	10
Note 3	Cash and Cash Equivalents	12
Note 4	Other Financial Assets	12
Note 5	Trade and Other Receivables	13
Note 6	Inventories	13
Note 7	Other Assets	14
Note 8	Property, Plant and Equipment	15
Note 9	Infrastructure	17
Note 10	Fixed Assets	19
Note 11	Trade and Other Payables	22
Note 12	Other Liabilities	23
Note 13	Employee Related Provisions	24
Note 14	Revaluation Surplus	25
Note 15	Notes to the Statement of Cash Flows	26
Note 16	Related Party Transactions	27
Note 17	Financial Risk Management	29
Note 18	Events Occurring After the End of the Reporting Period	32
Note 19	Other Significant Accounting Policies	33
Note 20	Function and Activity	34
 Information required by legislation		
Note 21	Rating Information	37
Note 22	Rate Setting Statement Information	39
Note 23	Reserve accounts	40

SHIRE OF NGAANYATJARRAKU
NOTES TO AND FORMING PART OF THE FINANCIAL REPORT
FOR THE YEAR ENDED 30 JUNE 2022

1. BASIS OF PREPARATION

The financial report comprises general purpose financial statements which have been prepared in accordance with the *Local Government Act 1995* and accompanying regulations.

Local Government Act 1995 requirements
Section 6.4(2) of the *Local Government Act 1995* read with the *Local Government (Financial Management) Regulations 1996* prescribe that the financial report be prepared in accordance with the *Local Government Act 1995* and, to the extent that they are not inconsistent with the Act, the Australian Accounting Standards. The Australian Accounting Standards (as they apply to local governments and not-for-profit entities) and Interpretations of the Australian Accounting Standards Board were applied where no inconsistencies exist.

The *Local Government (Financial Management) Regulations 1996* specify that vested land is a right-of-use asset to be measured at cost, and is considered a zero cost concessionary lease. All right-of-use assets under zero cost concessionary leases are measured at zero cost rather than at fair value, except for vested improvements on concessionary land leases such as roads, buildings or other infrastructure which continue to be reported at fair value, as opposed to the vested land which is measured at zero cost. The measurement of vested improvements at fair value is a departure from AASB 16 which would have required the Shire to measure any vested improvements at zero cost.

Accounting policies which have been adopted in the preparation of this financial report have been consistently applied unless stated otherwise. Except for cash flow and rate setting information, the financial report has been prepared on the accrual basis and is based on historical costs, modified, where applicable, by the measurement at fair value of selected non-current assets, financial assets and liabilities.

The local government reporting entity
All funds through which the Shire controls resources to carry on its functions have been included in the financial statements forming part of this financial report.

Judgements and estimates
The preparation of a financial report in conformity with Australian Accounting Standards requires management to make judgements, estimates and assumptions that effect the application of policies and reported amounts of assets and liabilities, income and expenses.

The estimates and associated assumptions are based on historical experience and various other factors that are believed to be reasonable under the circumstances; the results of which form the basis of making the judgements about carrying values of assets and liabilities that are not readily apparent from other sources. Actual results may differ from these estimates.

The balances, transactions and disclosures impacted by accounting estimates are as follows:

- estimated fair value of certain financial assets
- impairment of financial assets
- estimation of fair values of land and buildings, and infrastructure.

SHIRE OF NGAANYATJARRAKU
NOTES TO AND FORMING PART OF THE FINANCIAL REPORT
FOR THE YEAR ENDED 30 JUNE 2022

2. REVENUE AND EXPENSES

(a) Revenue

Contracts with customers

Recognition of revenue is dependant on the source of revenue and the associated terms and conditions associated with each source of revenue and recognised as follows:

Revenue Category	Nature of goods and services	When obligations typically satisfied	Payment terms	Returns/Refunds/Warranties	Timing of revenue recognition
Grant contracts with customers	Community events, minor facilities, research, design, planning evaluation and services	Over time	Fixed terms transfer of funds based on agreed milestones and reporting	Contract obligation if project not complete	Output method based on project milestones and/or completion date matched to performance obligations as inputs are shared
Grants, subsidies or contributions for the construction of non-financial assets	Construction or acquisition of recognisable non-financial assets to be controlled by the local government	Over time	Fixed terms transfer of funds based on agreed milestones and reporting	Contract obligation if project not complete	Output method based on project milestones and/or completion date matched to performance obligations as inputs are shared
Pool inspections	Compliance safety check	Single point in time	Equal proportion based on an equal annually fee	None	After inspection complete based on a 4 year cycle
Other inspections	Regulatory Food, Health and Safety	Single point in time	Full payment prior to inspection	None	Revenue recognised after inspection event occurs
Fees and charges for other goods and services	Shire services, other fees, reinstatements and private works	Single point in time	Payment in full in advance	None	Output method based on provision of service or completion of works
Sale of stock	Warta Shop and visitor centre stock	Single point in time	In full in advance	Refund for faulty goods	Output method based on goods

Revenue Recognition

Revenue recognised during the year under each basis of recognition by nature or types of goods or services is provided in the table below:

For the year ended 30 June 2022

Nature or type	Contracts with customers	Capital grant/contributions	Statutory Requirements	Other	Total
	\$	\$	\$	\$	\$
Rates			227,544	0	227,544
Operating grants, subsidies and contributions	1,233,493	0	0	5,375,198	6,608,691
Fees and charges	576,878	0	35,258	0	612,136
Interest earnings	0	0	901	22,258	23,159
Other revenue	0	0	440	273,613	274,053
Non-operating grants, subsidies and contributions	0	4,066,023	0	0	4,066,023
Total	1,810,371	4,066,023	264,143	5,671,069	11,811,606

For the year ended 30 June 2021

Nature or type	Contracts with customers	Capital grant/contributions	Statutory Requirements	Other	Total
	\$	\$	\$	\$	\$
Rates			172,589	0	172,589
Operating grants, subsidies and contributions	1,711,467	0	0	4,238,397	5,949,864
Fees and charges	471,631	0	71,850	0	543,481
Interest earnings	0	0	145	33,837	33,982
Other revenue	29,722	0	420	88,259	118,401
Non-operating grants, subsidies and contributions	0	2,472,913	0	0	2,472,913
Total	2,212,820	2,472,913	245,004	4,360,493	9,291,230

SHIRE OF NGAANYATJARRAKU
NOTES TO AND FORMING PART OF THE FINANCIAL REPORT
FOR THE YEAR ENDED 30 JUNE 2022

2. REVENUE AND EXPENSES (Continued)

	Note	2022 Actual	2022 Budget	2021 Actual
Interest earnings				
Interest on reserve funds		14,790	15,000	21,183
Rates instalment and penalty interest (refer Note 21(c))		901	0	145
Other interest earnings		7,468	10,150	12,654
		23,159	25,150	33,982
(b) Expenses				
Auditors remuneration				
- Audit of the Annual Financial Report		25,500	38,000	24,715
		25,500	38,000	24,715
Other expenditure				
Sundry expenses		52,092	78,740	24,679
		52,092	78,740	24,679

SHIRE OF NGAANYATJARRAKU
NOTES TO AND FORMING PART OF THE FINANCIAL REPORT
FOR THE YEAR ENDED 30 JUNE 2022

3. CASH AND CASH EQUIVALENTS

Cash at bank and on hand
Term deposits
Total cash and cash equivalents

Held as

- Unrestricted cash and cash equivalents
- Restricted cash and cash equivalents

Note	2022	2021
	\$	\$
	2,210,100	5,197,762
	0	4,862,136
15(a)	2,210,100	10,059,898
	2,210,100	5,197,762
15(a)	0	4,862,136
	2,210,100	10,059,898

SIGNIFICANT ACCOUNTING POLICIES

Cash and cash equivalents

Cash and cash equivalents include cash on hand, cash at bank, deposits available on demand with banks and other short term highly liquid investments with original maturities of three months or less that are readily convertible to known amounts of cash and which are subject to an insignificant risk of changes in value.

Term deposits are presented as cash equivalents if they have a maturity of three months or less from the date of acquisition and are repayable with 24 hours notice with no loss of interest.

Restricted financial assets

Restricted financial asset balances are not available for general use by the Shire due to externally imposed restrictions. Restrictions are specified in an agreement, contract or legislation. This applies to reserves, unspent grants, subsidies and contributions and unspent loans that have not been fully expended in the manner specified by the contributor, legislation or loan agreement and for which no liability has been recognised.

Details of restrictions on financial assets can be found at Note 15.

4. OTHER FINANCIAL ASSETS

(a) Current assets

Financial assets at amortised cost

Other financial assets at amortised cost

Term deposits

Held as

- Unrestricted other financial assets at amortised cost
- Restricted other financial assets at amortised cost

15(a)

2022	2021
\$	\$
9,077,576	0
9,077,576	0
9,077,576	0
9,077,576	0
3,500,360	0
5,577,216	0
9,077,576	0
38,901	36,903
38,901	36,903
38,901	36,903
38,901	36,903

(b) Non-current assets

Financial assets at fair value through profit and loss

Financial assets at fair value through profit and loss

Units in Local Government House Trust

SIGNIFICANT ACCOUNTING POLICIES

Financial assets at fair value through profit and loss

The Shire classifies the following financial assets at fair value through profit and loss:

- debt investments which do not qualify for measurement at either amortised cost or fair value through other comprehensive income.
- equity investments which the Shire has not elected to recognise fair value gains and losses through other comprehensive income.

Impairment and risk

Information regarding impairment and exposure to risk can be found at Note 17.

SHIRE OF NGAANYATJARRAKU
NOTES TO AND FORMING PART OF THE FINANCIAL REPORT
FOR THE YEAR ENDED 30 JUNE 2022

5. TRADE AND OTHER RECEIVABLES

Current

Rates receivable
Trade and other receivables
GST receivable
Receivables for employee related provisions

Note	2022	2021
	\$	\$
	15,588	0
	565,268	41,312
	27,201	0
13	11,243	0
	619,300	41,312

SIGNIFICANT ACCOUNTING POLICIES

Trade and other receivables

Trade and other receivables include amounts due from ratepayers for unpaid rates and service charges and other amounts due from third parties for grants, contributions, reimbursements, and goods sold and services performed in the ordinary course of business.

Trade and other receivables are recognised initially at the amount of consideration that is unconditional, unless they contain significant financing components, when they are recognised at fair value.

Impairment and risk exposure

Information about the impairment of trade receivables and their exposure to credit risk and interest rate risk can be found in Note 17.

Classification and subsequent measurement

Receivables which are generally due for settlement within 30 days except rates receivables which are expected to be collected within 12 months are classified as current assets. All other receivables such as, deferred pensioner rates receivable after the end of the reporting period are classified as non-current assets.

Trade and other receivables are held with the objective to collect the contractual cashflows and therefore the Shire measures them subsequently at amortised cost using the effective interest rate method.

Due to the short term nature of current receivables, their carrying amount is considered to be the same as their fair value. Non-current receivables are indexed to inflation, any difference between the face value and fair value is considered immaterial.

6. INVENTORIES

Current

Fuel and materials

Note	2022	2021
	\$	\$
	46,299	57,029
	46,299	57,029

The following movements in inventories occurred during the year:

Balance at beginning of year

Inventories expensed during the year

Additions to inventory

Balance at end of year

57,029	50,497
(24,573)	(29,721)
13,843	36,253
46,299	57,029

SIGNIFICANT ACCOUNTING POLICIES

General

Inventories are measured at the lower of cost and net realisable value.

Net realisable value is the estimated selling price in the ordinary course of business less the estimated costs of completion and the estimated costs necessary to make the sale.

SHIRE OF NGAANYATJARRAKU
NOTES TO AND FORMING PART OF THE FINANCIAL REPORT
FOR THE YEAR ENDED 30 JUNE 2022

7. OTHER ASSETS

Other assets - current

Prepayments

2022	2021
\$	\$
0	13,600
0	13,600

SIGNIFICANT ACCOUNTING POLICIES

Other current assets

Other non-financial assets include prepayments which represent payments in advance of receipt of goods or services or that part of expenditure made in one accounting period covering a term extending beyond that period.

SHIRE OF NGAANYATJARRAKU
NOTES TO AND FORMING PART OF THE FINANCIAL REPORT
FOR THE YEAR ENDED 30 JUNE 2022

8. PROPERTY, PLANT AND EQUIPMENT

(a) Movements in Balances

Movement in the balances of each class of property, plant and equipment between the beginning and the end of the current financial year

	Note	Buildings - non- specialised	Furniture and equipment	Plant and equipment	Total property, plant and equipment
		\$	\$	\$	\$
Balance at 1 July 2020		7,205,887	17,609	282,275	7,505,771
Additions		32,902	0	194,734	227,636
Disposals		0	0	(53,992)	(53,992)
Depreciation	10(a)	(152,277)	(10,390)	(92,644)	(255,311)
Balance at 30 June 2021		7,086,512	7,219	330,373	7,424,104
Comprises:					
Gross balance amount at 30 June 2021		8,923,334	187,426	2,086,637	11,197,397
Accumulated depreciation at 30 June 2021		(1,836,822)	(180,207)	(1,756,264)	(3,773,293)
Balance at 30 June 2021		7,086,512	7,219	330,373	7,424,104
Additions		12,185	68,793	103,843	184,821
Disposals		(4,056)	0	(13,517)	(17,573)
Revaluation increments / (decrements) transferred to revaluation surplus		5,901,486	0	0	5,901,486
Depreciation	10(a)	(132,395)	(16,420)	(126,435)	(275,250)
Transfers		(272,034)	0	198,127	(73,907)
Balance at 30 June 2022		12,591,698	59,592	492,391	13,143,681
Comprises:					
Gross balance amount at 30 June 2022		12,591,698	256,219	2,302,496	15,150,413
Accumulated depreciation at 30 June 2022		0	(196,627)	(1,810,105)	(2,006,732)
Balance at 30 June 2022		12,591,698	59,592	492,391	13,143,681

SHIRE OF NGAANYATJARRAKU
NOTES TO AND FORMING PART OF THE FINANCIAL REPORT
FOR THE YEAR ENDED 30 JUNE 2022

8. PROPERTY, PLANT AND EQUIPMENT (Continued)

(b) Carrying Value Measurements

Asset Class	Fair Value Hierarchy	Valuation Technique	Basis of Valuation	Date of Last Valuation	Inputs Used
(i) Fair Value					
Land and buildings					
Buildings - non-specialised	Level 3	Cost Approach Using Current Replacement Cost	Management Valuation	June 2022	Construction costs based on recent contract prices, current condition, residual values and remaining useful life assessments.
Level 3 inputs are based on assumptions with regards to future values and patterns of consumption utilising current information. If the basis of these assumptions were varied, they have the potential to result in a significantly higher or lower fair value measurement.					
During the period there were no changes in the valuation techniques used by the local government to determine the fair value of property, plant and equipment using either level 2 or level 3 inputs.					
(ii) Cost					
Furniture and equipment		N/A	Cost	Not applicable	N/A
Plant and equipment		N/A	Cost	Not applicable	N/A

SHIRE OF NGAANYATJARRAKU
NOTES TO AND FORMING PART OF THE FINANCIAL REPORT
FOR THE YEAR ENDED 30 JUNE 2022

9. INFRASTRUCTURE

(a) Movements in Balances

Movement in the balances of each class of infrastructure between the beginning and the end of the current financial year.

	Note	Infrastructure - roads \$	Other infrastructure - recreation \$	Other infrastructure \$	Total Infrastructure \$
Balance at 1 July 2020		103,999,111	132,642	204,181	104,335,934
Additions		3,488,573	823	0	3,489,396
Depreciation	10(a)	(1,373,786)	(2,742)	(10,209)	(1,386,737)
Balance at 30 June 2021		106,113,898	130,723	193,972	106,438,593
Comprises:					
Gross balance at 30 June 2021		125,585,450	439,872	204,181	126,229,503
Accumulated depreciation at 30 June 2021		(19,471,552)	(309,149)	(10,209)	(19,790,910)
Balance at 30 June 2021		106,113,898	130,723	193,972	106,438,593
Additions		5,440,346	0	68,409	5,508,755
Depreciation	10(a)	(1,533,240)	(2,757)	(11,086)	(1,547,083)
Transfers				73,907	73,907
Balance at 30 June 2022		110,021,004	127,966	325,202	110,474,172
Comprises:					
Gross balance at 30 June 2022		131,025,796	439,872	346,497	131,812,165
Accumulated depreciation at 30 June 2022		(21,004,792)	(311,906)	(21,295)	(21,337,993)
Balance at 30 June 2022		110,021,004	127,966	325,202	110,474,172

SHIRE OF NGAANYATJARRAKU
NOTES TO AND FORMING PART OF THE FINANCIAL REPORT
FOR THE YEAR ENDED 30 JUNE 2022

9. INFRASTRUCTURE (Continued)

(b) Carrying Value Measurements

Asset Class	Fair Value Hierarchy	Valuation Technique	Basis of Valuation	Date of Last Valuation	Inputs Used
(i) Fair Value					
Infrastructure - roads	Level 3	Cost Approach Using Current Replacement Cost	Management Valuation	June 2018	Construction costs based on recent contract prices, current condition, residual values and remaining useful life assessments.
Other infrastructure - recreation	Level 3	Cost Approach Using Current Replacement Cost	Management Valuation	June 2018	Construction costs based on recent contract prices, current condition, residual values and remaining useful life assessments.
Other infrastructure	Level 3	Cost Approach Using Current Replacement Cost	Management Valuation	June 2018	Construction costs based on recent contract prices, current condition, residual values and remaining useful life assessments.

Level 3 inputs are based on assumptions with regards to future values and patterns of consumption utilising current information. If the basis of these assumptions were varied, they have the potential to result in a significantly higher or lower fair value measurement.

During the period there were no changes in the valuation techniques used to determine the fair value of infrastructure using level 3 inputs.

SHIRE OF NGAANYATJARRAKU
NOTES TO AND FORMING PART OF THE FINANCIAL REPORT
FOR THE YEAR ENDED 30 JUNE 2022

10. FIXED ASSETS

(a) Depreciation

	Note	2022 Actual \$	2022 Budget \$	2021 Actual \$
Buildings - non-specialised	8(a)	132,395	153,111	152,277
Furniture and equipment	8(a)	16,420	10,446	10,390
Plant and equipment	8(a)	126,435	101,562	92,644
Infrastructure - roads	9(a)	1,533,240	1,516,312	1,373,786
Other infrastructure - recreation	9(a)	2,757	2,756	2,742
Other infrastructure	9(a)	11,086	10,265	10,209
		1,822,333	1,794,452	1,642,048

Depreciation rates

Typical estimated useful lives for the different asset classes for the current and prior years are included in the table below:

Asset Class	Useful life
Buildings	50 years
Furniture and equipment	4 years
Plant and equipment	5 to 7 years
Sealed roads and streets	
- formation	not depreciated
- pavement	8 to 31 years
- seal	
- bituminous seals	3 to 20 years
- asphalt surfaces	3 to 20 years
Gravel roads	
- formation	not depreciated
- pavement	8 to 31 years
- kerb	6 to 14 years

SHIRE OF NGAANYATJARRAKU
NOTES TO AND FORMING PART OF THE FINANCIAL REPORT
FOR THE YEAR ENDED 30 JUNE 2022

10. FIXED ASSETS (Continued)

(b) Disposals of assets

	2022 Actual Net Book Value	2022 Actual Sale Proceeds	2022 Actual Profit	2022 Actual Loss	2022 Budget Net Book Value	2022 Budget Sale Proceeds	2022 Budget Profit	2022 Budget Loss	2021 Actual Net Book Value	2021 Actual Sale Proceeds	2021 Actual Profit	2021 Actual Loss
	\$	\$	\$	\$	\$	\$	\$	\$	\$	\$	\$	\$
Buildings - non-specialised	4,056	0	0	(4,056)	0	0	0	0	0	0	0	0
Plant and equipment	13,517	86,818	76,471	(3,170)	60,000	75,000	15,000	0	53,992	92,954	60,572	(21,610)
	17,573	86,818	76,471	(7,226)	60,000	75,000	15,000	0	53,992	92,954	60,572	(21,610)

The following assets were disposed of during the year.

During the year Shire of Ngaanyatjaraku disposed of its 1/10th interests in the Goldfields Records facility on the winding up of the venture. The proceeds have been included in other revenue.

	2022 Actual Net Book Value	2022 Actual Sale Proceeds	2022 Actual Profit	2022 Actual Loss
Plant and Equipment				
Governance	\$	\$	\$	\$
PE052 2012 Prado VX Wagon	5,183	38,636	33,453	0
Community amenities				
PE031 Warakurna Rubbish Truck	3,170	0	0	(3,170)
Recreation and culture				
PE014 2013 Troopcarrier	4,213	32,427	28,214	0
Transport				
PE070 2012 Triton Utility	951	15,755	14,804	0
	13,517	86,818	76,471	(3,170)
Land and buildings				
Transport				
Depot container	1,601	0	0	(1,601)
Sea container	2,455	0	0	(2,455)
	4,056	0	0	(4,056)
	17,573	86,818	76,471	(7,226)

10. FIXED ASSETS (Continued)

SIGNIFICANT ACCOUNTING POLICIES

Fixed assets

Each class of fixed assets within either property, plant and equipment or infrastructure, is carried at cost or fair value as indicated less, where applicable, any accumulated depreciation and impairment losses.

Initial recognition and measurement for assets held at cost

Plant and equipment including furniture and equipment is recognised at cost on acquisition in accordance with *Financial Management Regulation 17A*. Where acquired at no cost the asset is initially recognised at fair value. Assets held at cost are depreciated and assessed for indicators of impairment annually.

Initial recognition and measurement between mandatory revaluation dates for assets held at fair value

Assets for which the fair value as at the date of acquisition is under \$5,000 are not recognised as an asset in accordance with *Financial Management Regulation 17A (5)*. These assets are expensed immediately.

Where multiple individual low value assets are purchased together as part of a larger asset or collectively forming a larger asset exceeding the threshold, the individual assets are recognised as one asset and capitalised.

In relation to this initial measurement, cost is determined as the fair value of the assets given as consideration plus costs incidental to the acquisition. For assets acquired at zero cost or otherwise significantly less than fair value, cost is determined as fair value at the date of acquisition. The cost of non-current assets constructed by the Shire includes the cost of all materials used in construction, direct labour on the project and an appropriate proportion of variable and fixed overheads.

Individual assets that are land, buildings and infrastructure acquired between scheduled revaluation dates of the asset class in accordance with the mandatory measurement framework, are recognised at cost and disclosed as being at fair value as management believes cost approximates fair value. They are subject to subsequent revaluation at the next revaluation date in accordance with the mandatory measurement framework.

Revaluation

The fair value of land, buildings and infrastructure is determined at least every five years in accordance with the regulatory framework. This includes buildings and infrastructure items which were pre-existing improvements (i.e. vested improvements) on vested land acquired by the Shire.

At the end of each period the carrying amount for each asset class is reviewed and where appropriate the fair value is updated to reflect current market conditions. This process is considered to be in accordance with *Local Government (Financial Management) Regulation 17A (2)* which requires land, buildings, infrastructure, investment properties and vested improvements to be shown at fair value.

Revaluation (continued)

For property, plant and equipment and infrastructure, increases in the carrying amount arising on revaluation of assets are credited to a revaluation surplus in equity. Decreases that offset previous increases of the same class of asset are recognised against revaluation surplus directly in equity. All other decreases are recognised in profit or loss. Subsequent increases are then recognised in profit or loss to the extent they reverse a net revaluation decrease previously recognised in profit or loss for the same class of asset.

Depreciation

The depreciable amount of all property, plant and equipment and infrastructure, are depreciated on a straight-line basis over the individual asset's useful life from the time the asset is held ready for use. Leasehold improvements are depreciated over the shorter of either the unexpired period of the lease or the estimated useful life of the improvements.

The assets residual values and useful lives are reviewed, and adjusted if appropriate, at the end of each reporting period.

An asset's carrying amount is written down immediately to its recoverable amount if the asset's carrying amount is greater than its estimated recoverable amount.

Gains and losses on disposals are determined by comparing proceeds with the carrying amount. These gains and losses are included in the statement of comprehensive income in the period in which they arise.

Depreciation on revaluation

When an item of property, plant and equipment and infrastructure is revalued, any accumulated depreciation at the date of the revaluation is eliminated against the gross carrying amount of the asset and the net amount restated to the revalued amount of the asset.

SHIRE OF NGAANYATJARRAKU
NOTES TO AND FORMING PART OF THE FINANCIAL REPORT
FOR THE YEAR ENDED 30 JUNE 2022

11. TRADE AND OTHER PAYABLES

Current

Sundry creditors
 Prepaid rates
 Accrued payroll liabilities
 ATO liabilities
 Income in advance
 Other payables

2022	2021
\$	\$
366,383	385,353
3,553	0
39,410	33,199
0	32,411
30,425	0
676	1,531
440,447	452,494

SIGNIFICANT ACCOUNTING POLICIES

Financial liabilities

Financial liabilities are initially recognised at fair value when the Shire becomes a party to the contractual provisions of the instrument.

Non-derivative financial liabilities (excluding financial guarantees) are subsequently measured at amortised cost.

Financial liabilities are derecognised where the related obligations are discharged, cancelled or expired. The difference between the carrying amount of the financial liability extinguished or transferred to another party and the fair value of the consideration paid, including the transfer of non-cash assets or liabilities assumed, is recognised in profit or loss.

Trade and other payables

Trade and other payables represent liabilities for goods and services provided to the Shire prior to the end of the financial year that are unpaid and arise when the Shire becomes obliged to make future payments in respect of the purchase of these goods and services.

The amounts are unsecured, are recognised as a current liability and are usually paid within 30 days of recognition. The carrying amounts of trade and other payables are considered to be the same as their fair values, due to their short-term nature.

Prepaid rates

Prepaid rates are, until the taxable event has occurred (start of the next financial year), refundable at the request of the ratepayer. Rates received in advance are initially recognised as a financial liability. When the taxable event occurs, the financial liability is extinguished and the Shire recognises revenue for the prepaid rates that have not been refunded.

SHIRE OF NGAANYATJARRAKU
NOTES TO AND FORMING PART OF THE FINANCIAL REPORT
FOR THE YEAR ENDED 30 JUNE 2022

12. OTHER LIABILITIES

Current

Contract liabilities

Reconciliation of changes in contract liabilities

Opening balance

Additions

Revenue from contracts with customers included as a contract liability at the start of the period

The Shire expects to satisfy the performance obligations from contracts with customers unsatisfied at the end of the reporting period to be satisfied within the next 12 months.

Reconciliation of changes in capital grant/contribution liabilities

Opening balance

Additions

Revenue from capital grant/contributions held as a liability at the start of the period

Expected satisfaction of capital grant/contribution liabilities

Less than 1 year

	2022	2021
	\$	\$
Contract liabilities	952,376	1,504,253
	952,376	1,504,253
Opening balance	1,504,253	317,137
Additions	952,376	1,504,253
Revenue from contracts with customers included as a contract liability at the start of the period	(1,504,253)	(317,137)
	952,376	1,504,253
Opening balance	0	0
Additions	0	0
Revenue from capital grant/contributions held as a liability at the start of the period	0	0
	0	0
Expected satisfaction of capital grant/contribution liabilities	952,376	1,504,253
Less than 1 year	952,376	0

Performance obligations in relation to capital grant/contribution liabilities are satisfied as project milestones are met or completion of construction or acquisition of the asset.

SIGNIFICANT ACCOUNTING POLICIES

Contract liabilities

Contract liabilities represent the Shire's obligation to transfer goods or services to a customer for which the Shire has received consideration from the customer.

Contract liabilities represent obligations which are not yet satisfied. Contract liabilities are recognised as revenue when the performance obligations in the contract are satisfied.

Capital grant/contribution liabilities

Capital grant/contribution liabilities represent the Shire's obligations to construct recognisable non-financial assets to identified specifications to be controlled the Shire which are yet to be satisfied. Capital grant/contribution liabilities are recognised as revenue when the obligations in the contract are satisfied.

Non-current capital grant/contribution liabilities fair values are based on discounted cash flows of expected cashflows to satisfy the obligations using a current borrowing rate. They are classified as level 3 fair values in the fair value hierarchy (see Note 19(i)) due to the unobservable inputs, including own credit risk.

SHIRE OF NGAANYATJARRAKU
NOTES TO AND FORMING PART OF THE FINANCIAL REPORT
FOR THE YEAR ENDED 30 JUNE 2022

13. EMPLOYEE RELATED PROVISIONS

Employee Related Provisions

	2022	2021
	\$	\$
Current provisions		
Employee benefit provisions		
Annual Leave	173,887	102,775
Long Service Leave	92,731	95,122
Other employee provisions	5,583	5,639
	272,201	203,536
Non-current provisions		
Long Service Leave	23,551	13,791
	23,551	13,791
	295,752	217,327

Provision is made for benefits accruing to employees in respect of wages and salaries, annual leave and long service leave and associated on costs for services rendered up to the reporting date and recorded as an expense during the period the services are delivered.

Annual leave liabilities are classified as current, as there is no unconditional right to defer settlement for at least 12 months after the end of the reporting period. Assessments indicate that actual settlement of the liabilities is expected to occur as follows:

	Note	2022	2021
		\$	\$
Amounts are expected to be settled on the following basis:			
Less than 12 months after the reporting date		179,470	108,414
More than 12 months from reporting date		116,282	108,913
		295,752	217,327
Expected reimbursements of employee related provisions from other WA local governments included within other receivables	5	11,243	0

SIGNIFICANT ACCOUNTING POLICIES

Employee benefits

The Shire's obligations for employees' annual leave, long service leave and other employee leave entitlements are recognised as employee related provisions in the Statement of Financial Position.

Short-term employee benefits

Provision is made for the Shire's obligations for short-term employee benefits. Short-term employee benefits are benefits (other than termination benefits) that are expected to be settled wholly before 12 months after the end of the annual reporting period in which the employees render the related service, including wages, salaries and sick leave. Short-term employee benefits are measured at the (undiscounted) amounts expected to be paid when the obligation is settled.

The Shire's obligations for short-term employee benefits such as wages, salaries and sick leave are recognised as a part of current trade and other payables in the statement of financial position.

Other long-term employee benefits

Long-term employee benefits provisions are measured at the present value of the expected future payments to be made to employees. Expected future payments incorporate anticipated future wage and salary levels, durations of service and employee departures and are discounted at rates determined by reference to market yields at the end of the reporting period on government bonds that have maturity dates that approximate the terms of the obligations. Any remeasurements for changes in assumptions of obligations for other long-term employee benefits are recognised in profit or loss in the periods in which the changes occur.

The Shire's obligations for long-term employee benefits are presented as non-current provisions in its statement of financial position, except where the Shire does not have an unconditional right to defer settlement for at least 12 months after the end of the reporting period, in which case the obligations are presented as current provisions.

SHIRE OF NGAANYATJARRAKU
NOTES TO AND FORMING PART OF THE FINANCIAL REPORT
FOR THE YEAR ENDED 30 JUNE 2022

14. REVALUATION SURPLUS

	2022 Opening Balance	2022 Revaluation Increment	2022 Revaluation (Decrement)	Total Movement on Revaluation	2022 Closing Balance	2021 Opening Balance	2021 Revaluation Increment	2021 Closing Balance
	\$	\$	\$	\$	\$	\$	\$	\$
Buildings - non-specialised	4,052,570	5,901,486	0	5,901,486	9,954,056	4,052,570	0	4,052,570
Plant and equipment	190,407	0	0	0	190,407	190,407	0	190,407
Infrastructure - roads	49,024,610	0	0	0	49,024,610	49,024,610	0	49,024,610
	53,267,587	5,901,486	0	5,901,486	59,169,073	53,267,587	0	53,267,587

Movements on revaluation of property, plant and equipment are not able to be reliably attributed to a program as the assets were revalued by class as provided for by AASB 116 Aus 40.1.

SHIRE OF NGAANYATJARRAKU
NOTES TO AND FORMING PART OF THE FINANCIAL REPORT
FOR THE YEAR ENDED 30 JUNE 2022

15. NOTES TO THE STATEMENT OF CASH FLOWS

(a) Reconciliation of Cash

For the purposes of the Statement of Cash Flows, cash includes cash and cash equivalents, net of outstanding bank overdrafts. Cash at the end of the reporting period is reconciled to the related items in the Statement of Financial Position as follows:

	Note	2022 Actual \$	2022 Budget \$	2021 Actual \$
Cash and cash equivalents	3	2,210,100	7,009,764	10,059,898

Restrictions

The following classes of financial assets have restrictions imposed by regulations or other externally imposed requirements which limit or direct the purpose for which the resources may be used:

- Cash and cash equivalents	3	0	4,963,791	4,862,136
- Financial assets at amortised cost	4(a)	5,577,216	0	0
		5,577,216	4,963,791	4,862,136

The restricted financial assets are a result of the following specific purposes to which the assets may be used:

Restricted reserve accounts	23	5,577,216	4,963,791	4,862,136
Total restricted financial assets		5,577,216	4,963,791	4,862,136

**(b) Reconciliation of Net Result to Net Cash Provided
By Operating Activities**

Net result		6,122,603	1,209,216	3,674,720
Non-cash items:				
Adjustments to fair value of financial assets at fair value through profit and loss		(1,998)	0	0
Depreciation/amortisation		1,822,333	1,794,452	1,642,048
(Profit)/loss on sale of asset		(69,245)	(15,000)	(38,962)
Changes in assets and liabilities:				
(Increase)/decrease in trade and other receivables		(577,988)	0	20,780
(Increase)/decrease in other assets		13,600	0	(10,075)
(Increase)/decrease in inventories		10,730	0	(6,532)
Increase/(decrease) in trade and other payables		(12,047)	0	269,819
Increase/(decrease) in employee related provisions		78,425	0	44,360
Increase/(decrease) in other liabilities		(551,877)	0	1,187,116
Non-operating grants, subsidies and contributions		(4,066,023)	(4,395,093)	(2,472,913)
Net cash provided by/(used in) operating activities		2,768,513	(1,406,425)	4,310,361

(c) Undrawn Borrowing Facilities

Credit Standby Arrangements

Bank overdraft limit	0	0
Bank overdraft at balance date	0	0
Credit card limit	30,000	20,000
Credit card balance at balance date	5,563	4,549
Total amount of credit unused	35,563	24,549

Loan facilities

Loan facilities - current	0	0
Loan facilities - non-current	0	0
Total facilities in use at balance date	0	0

Unused loan facilities at balance date

16. RELATED PARTY TRANSACTIONS

Cr John Damian McLean

President's annual allowance

Meeting attendance fees

Travel and accommodation expenses

Cr Andrew Jones

Deputy President's annual allowance

Meeting attendance fees

Travel and accommodation expenses

Cr Alwyn Bates

Meeting attendance fees

Travel and accommodation expenses

Cr Lalla West

Meeting attendance fees

Travel and accommodation expenses

Cr Joylene Frazer

Meeting attendance fees

Travel and accommodation expenses

Cr Julie Porter

Meeting attendance fees

Travel and accommodation expenses

Cr Debra Frazer

Meeting attendance fees

Travel and accommodation expenses

Cr Alex Benning

Meeting attendance fees

Travel and accommodation expenses

Cr Preston Thomas

Deputy President's annual allowance

Meeting attendance fees

Fees, expenses and allowances to be paid or reimbursed to elected council members.

President's annual allowance

Deputy President's annual allowance

Meeting attendance fees

Travel and accommodation expenses

16(b)

SHIRE OF NGAANYATJARRAKU
NOTES TO AND FORMING PART OF THE FINANCIAL REPORT
FOR THE YEAR ENDED 30 JUNE 2022

16. RELATED PARTY TRANSACTIONS (Continued)

(b) Key Management Personnel (KMP) Compensation

The total of compensation paid to KMP of the Shire during the year are as follows:

	2022 Actual	2021 Actual
	\$	\$
Short-term employee benefits	722,141	530,488
Post-employment benefits	71,186	49,672
Employee - other long-term benefits	59,119	44,587
Council member costs	32,607	26,347
16(a)	885,053	651,094

Short-term employee benefits

These amounts include all salary and fringe benefits awarded to KMP except for details in respect to fees and benefits paid to council members which may be separately found in the table above.

Post-employment benefits

These amounts are the current-year's cost of the Shire's superannuation contributions made during the year.

Other long-term benefits

These amounts represent annual leave and long service leave entitlements accruing during the year.

Council member costs

These amounts represent payments of member fees, expenses, allowances and reimbursements during the year.

(c) Related Parties

The Shire's main related parties are as follows:

i. Key management personnel

Any person(s) having authority and responsibility for planning, directing and controlling the activities of the entity, directly or indirectly, including any council member, are considered key management personnel.

ii. Other Related Parties

An associate person of KMP was employed by the Shire under normal employment terms and conditions.

Any entity that is controlled by or over which KMP, or close family members of KMP, have authority and responsibility for planning, directing and controlling the activity of the entity, directly or indirectly, are considered related parties in relation to the Shire.

SHIRE OF NGAANYATJARRAKU
NOTES TO AND FORMING PART OF THE FINANCIAL REPORT
FOR THE YEAR ENDED 30 JUNE 2022

17. FINANCIAL RISK MANAGEMENT

This note explains the Shire's exposure to financial risks and how these risks could affect the Shire's future financial performance.

Risk	Exposure arising from	Measurement	Management
Market risk - interest rates	Long term borrowings at variable rates	Sensitivity analysis	Utilise fixed interest rate borrowings
Credit risk	Cash and cash equivalents, trade receivables, financial assets and debt investments	Aging analysis Credit analysis	Diversification of bank deposits, credit limits. Investment policy
Liquidity risk	Borrowings and other liabilities	Rolling cash flow forecasts	Availability of committed credit lines and borrowing facilities

The Shire does not engage in transactions expressed in foreign currencies and is therefore not subject to foreign currency risk.

Financial risk management is carried out by the finance area under policies approved by the Council. The finance area identifies, evaluates and manages financial risks in close co-operation with the operating divisions. Council have approved the overall risk management policy and provide policies on specific areas such as investment policy.

(a) Interest rate risk

Cash and cash equivalents

The Shire's main interest rate risk arises from cash and cash equivalents with variable interest rates, which exposes the Shire to cash flow interest rate risk. Short term overdraft facilities also have variable interest rates however these are repaid within 12 months, reducing the risk level to minimal.

Excess cash and cash equivalents are invested in fixed interest rate term deposits which do not expose the Shire to cash flow interest rate risk. Cash and cash equivalents required for working capital are held in variable interest rate accounts and non-interest bearing accounts. Carrying amounts of cash and cash equivalents at the 30 June and the weighted average interest rate across all cash and cash equivalents, term deposits, and Treasury bonds held disclosed as financial assets at amortised cost are reflected in the table below.

	Weighted Average Interest Rate	Carrying Amounts	Fixed Interest Rate	Variable Interest Rate	Non Interest Bearing
	%	\$	\$	\$	\$
2022					
Cash and cash equivalents	0.418%	2,210,100	0	2,207,500	2,600
Financial assets at amortised cost - term deposits	2.86%	9,077,576	9,077,576	0	
2021					
Cash and cash equivalents	0.24%	10,059,898	4,862,136	5,195,262	2,500

Sensitivity

Profit or loss is sensitive to higher/lower interest income from cash and cash equivalents as a result of changes in interest rates.

Impact of a 1% movement in interest rates on profit and loss and equity*

* Holding all other variables constant

2022	2021
\$	\$
22,075	51,953

Borrowings

Borrowings are subject to interest rate risk - the risk that movements in interest rates could adversely affect funding costs. The Shire manages this risk by borrowing long term and fixing the interest rate to the situation considered the most advantageous at the time of negotiation. The Shire does not consider there to be any interest rate risk in relation to borrowings. Details of interest rates applicable to each borrowing may be found at Note 22(a).

SHIRE OF NGAANYATJARRAKU
NOTES TO AND FORMING PART OF THE FINANCIAL REPORT
FOR THE YEAR ENDED 30 JUNE 2022

17. FINANCIAL RISK MANAGEMENT (Continued)

(b) Credit risk

Trade and Other Receivables

The Shire's major receivables comprise rates annual charges and user fees and charges. The major risk associated with these receivables is credit risk – the risk that the debts may not be repaid. The Shire manages this risk by monitoring outstanding debt and employing debt recovery policies. It also encourages ratepayers to pay rates by the due date through incentives.

Credit risk on rates and annual charges is minimised by the ability of the Shire to recover these debts as a secured charge over the land, that is, the land can be sold to recover the debt. The Shire is able to charge interest on overdue rates and annual charges at higher than market rates, which further encourages payment.

The level of outstanding receivables is reported to Council monthly and benchmarks are set and monitored for acceptable collection performance.

The Shire applies the AASB 9 simplified approach to measuring expected credit losses using a lifetime expected loss allowance for all trade receivables. To measure the expected credit losses, rates receivable are separated from other trade receivables due to the difference in payment terms and security for rates receivable.

The expected loss rates are based on the payment profiles of rates and fees and charges over a period of 36 months before 1 July 2021 or 1 July 2022 respectively and the corresponding historical losses experienced within this period. Historical credit loss rates are adjusted to reflect current and forward-looking information on macroeconomic factors such as the ability of ratepayers and residents to settle the receivables. Housing prices and unemployment rates have been identified as the most relevant factor in repayment rates, and accordingly adjustments are made to the expected credit loss rate based on these factors.

The loss allowance as at 30 June 2022 and 30 June 2021 for rates receivable was determined as follows:

	Less than 1 year past due	More than 1 year past due	More than 2 years past due	More than 3 years past due	Total
30 June 2022					
Rates receivable					
Expected credit loss	0.00%	0.00%	0.00%	0.00%	
Gross carrying amount	15,588	0	0	0	15,588
Loss allowance	0	0	0	0	0

30 June 2021

Rates receivable					
Expected credit loss	0.00%	0.00%	0.00%	0.00%	
Gross carrying amount	0	0	0	0	0
Loss allowance	0	0	0	0	0

The loss allowance as at 30 June 2022 and 30 June 2021 was determined as follows for trade receivables.

	Less than 1 year past due	More than 30 days past due	More than 60 days past due	More than 90 days past due	Total
30 June 2022					
Trade and other receivables					
Expected credit loss	0.00%	0.00%	0.00%	0.00%	
Gross carrying amount	520,720	43,156	0	1,392	565,268
Loss allowance	0	0	0	0	0

30 June 2021

Trade and other receivables					
Expected credit loss	0.00%	0.00%	0.00%	0.00%	
Gross carrying amount	40,562	0	0	750	41,312
Loss allowance	0	0	0	0	0

SHIRE OF NGAANYATJARRAKU
NOTES TO AND FORMING PART OF THE FINANCIAL REPORT
FOR THE YEAR ENDED 30 JUNE 2022

17. FINANCIAL RISK MANAGEMENT (Continued)

(c) Liquidity risk

Payables

Payables are subject to liquidity risk – that is the risk that insufficient funds may be on hand to meet payment obligations as and when they fall due. The Shire manages this risk by monitoring its cash flow requirements and liquidity levels and maintaining an adequate cash buffer. Payment terms can be extended and overdraft facilities drawn upon if required and disclosed in Note 15(c).

The contractual undiscounted cash flows of the Shire's Payables are set out in the liquidity table below. Balances due within 12 months equal their carrying balances, as the impact of discounting is not significant.

	Due within 1 year	Due between 1 & 5 years	Due after 5 years	Total contractual cash flows	Carrying values
	\$	\$	\$	\$	\$
2022					
Trade and other payables	440,447	0	0	440,447	440,447
	440,447	0	0	440,447	440,447
2021					
Trade and other payables	452,494	0	0	452,494	452,494
	452,494	0	0	452,494	452,494

**SHIRE OF NGAANYATJARRAKU
NOTES TO AND FORMING PART OF THE FINANCIAL REPORT
FOR THE YEAR ENDED 30 JUNE 2022**

18. EVENTS OCCURRING AFTER THE END OF THE REPORTING PERIOD

The Shire of Ngaanyatjarraku has no Subsequent Events to report.

19. OTHER SIGNIFICANT ACCOUNTING POLICIES

a) Goods and services tax (GST)

Revenues, expenses and assets are recognised net of the amount of GST, except where the amount of GST incurred is not recoverable from the Australian Taxation Office (ATO).

Receivables and payables are stated inclusive of GST receivable or payable. The net amount of GST recoverable from, or payable to, the ATO is included with receivables or payables in the statement of financial position.

Cash flows are presented on a gross basis. The GST components of cash flows arising from investing or financing activities which are recoverable from, or payable to, the ATO are presented as operating cash flows.

b) Current and non-current classification

The asset or liability is classified as current if it is expected to be settled within the next 12 months, being the Shire's operational cycle. In the case of liabilities where the Shire does not have the unconditional right to defer settlement beyond 12 months, such as vested long service leave, the liability is classified as current even if not expected to be settled within the next 12 months. Inventories held for trading are classified as current or non-current based on the Shire's intentions to release for sale.

c) Rounding off figures

All figures shown in this annual financial report, other than a rate in the dollar, are rounded to the nearest dollar. Amounts are presented in Australian Dollars.

d) Comparative figures

Where required, comparative figures have been adjusted to conform with changes in presentation for the current financial year.

When the Shire applies an accounting policy retrospectively, makes a retrospective restatement or reclassifies items in its financial statements that has a material effect on the statement of financial position, an additional (third) Statement of Financial Position as at the beginning of the preceding period in addition to the minimum comparative financial statements is presented.

e) Budget comparative figures

Unless otherwise stated, the budget comparative figures shown in this annual financial report relate to the original budget estimate for the relevant item of disclosure.

f) Superannuation

The Shire contributes to a number of Superannuation Funds on behalf of employees. All funds to which the Shire contributes are defined contribution plans.

g) Fair value of assets and liabilities

Fair value is the price that the Shire would receive to sell the asset or would have to pay to transfer a liability, in an orderly (i.e. unforced) transaction between independent, knowledgeable and willing market participants at the measurement date.

As fair value is a market-based measure, the closest equivalent observable market pricing information is used to determine fair value. Adjustments to market values may be made having regard to the characteristics of the specific asset or liability. The fair values of assets that are not traded in an active market are determined using one or more valuation techniques. These valuation techniques maximise, to the extent possible, the use of observable market data.

To the extent possible, market information is extracted from either the principal market for the asset or liability (i.e. the market with the greatest volume and level of activity for the asset or liability) or, in the absence of such a market, the most advantageous market available to the entity at the end of the reporting period (i.e. the market that maximises the receipts from the sale of the asset after taking into account transaction costs and transport costs).

For non-financial assets, the fair value measurement also takes into account a market participant's ability to use the asset in its highest and best use or to sell it to another market participant that would use the asset in its highest and best use.

h) Interest earnings

Interest income is calculated by applying the effective interest rate to the gross carrying amount of a financial asset measured at amortised cost except for financial assets that subsequently become credit-impaired. For credit-impaired financial assets the effective interest rate is applied to the net carrying amount of the financial asset (after deduction of the loss allowance).

i) Fair value hierarchy

AASB 13 requires the disclosure of fair value information by level of the fair value hierarchy, which categorises fair value measurement into one of three possible levels based on the lowest level that an input that is significant to the measurement can be categorised into as follows:

Level 1

Measurements based on quoted prices (unadjusted) in active markets for identical assets or liabilities that the entity can access at the measurement date.

Level 2

Measurements based on inputs other than quoted prices included in Level 1 that are observable for the asset or liability, either directly or indirectly.

Level 3

Measurements based on unobservable inputs for the asset or liability.

The fair values of assets and liabilities that are not traded in an active market are determined using one or more valuation techniques. These valuation techniques maximise, to the extent possible, the use of observable market data. If all significant inputs required to measure fair value are observable, the asset or liability is included in Level 2. If one or more significant inputs are not based on observable market data, the asset or liability is included in Level 3.

Valuation techniques

The Shire selects a valuation technique that is appropriate in the circumstances and for which sufficient data is available to measure fair value. The availability of sufficient and relevant data primarily depends on the specific characteristics of the asset or liability being measured. The valuation techniques selected by the Shire are consistent with one or more of the following valuation approaches:

Market approach

Valuation techniques that use prices and other relevant information generated by market transactions for identical or similar assets or liabilities.

Income approach

Valuation techniques that convert estimated future cash flows or income and expenses into a single discounted present value.

Cost approach

Valuation techniques that reflect the current replacement cost of the service capacity of an asset.

Each valuation technique requires inputs that reflect the assumptions that buyers and sellers would use when pricing the asset or liability, including assumptions about risks. When selecting a valuation technique, the Shire gives priority to those techniques that maximise the use of observable inputs and minimise the use of unobservable inputs. Inputs that are developed using market data (such as publicly available information on actual transactions) and reflect the assumptions that buyers and sellers would generally use when pricing the asset or liability are considered observable, whereas inputs for which market data is not available and therefore are developed using the best information available about such assumptions are considered unobservable.

j) Impairment of assets

In accordance with Australian Accounting Standards the Shire's cash generating non-specialised assets, other than inventories, are assessed at each reporting date to determine whether there is any indication they may be impaired.

Where such an indication exists, an impairment test is carried out on the asset by comparing the recoverable amount of the asset, being the higher of the asset's fair value less costs to sell and value in use, to the asset's carrying amount.

Any excess of the asset's carrying amount over its recoverable amount is recognised immediately in profit or loss, unless the asset is carried at a revalued amount in accordance with another Standard (e.g. AASB 116) whereby any impairment loss of a revalued asset is treated as a revaluation decrease in accordance with that other Standard.

For non-cash generating specialised assets that are measured under the revaluation model, such as roads, drains, public buildings and the like, no annual assessment of impairment is required. Rather AASB 116.31 applies and revaluations need only be made with sufficient regularity to ensure the carrying value does not differ materially from that which would be determined using fair value at the end of the reporting period.

k) Initial application of accounting standards

During the current year, no new or revised Australian Accounting Standards and Interpretations were compiled, became mandatory and were applicable to its operations.

New accounting standards for application in future years

The following new accounting standards will have application to local government in future years:

- AASB 2020-1 Amendments to Australian Accounting Standards - Classification of Liabilities as Current or Non-current
- AASB 2020-3 Amendments to Australian Accounting Standards - Annual Improvements 2018-2020 and Other Amendments
- AASB 2021-2 Amendments to Australian Accounting Standards - Disclosure of Accounting Policies or Definition of Accounting Estimates
- AASB 2021-7 Amendments to Australian Accounting Standards – Effective Date of Amendments to AASB 10 and AASB 128 and Editorial Corrections

It is not expected these standards will have an impact on the financial report.

20. FUNCTION AND ACTIVITY

(a) Service objectives and descriptions

Shire operations as disclosed in this financial report encompass the following service orientated functions and activities.

Objective	Description
Governance To provide a decision-making process for the efficient allocation of scarce resources.	Includes the activities of members of council and the administrative support available to the council for the provision of governance of the district. Other costs relate to the task of assisting elected members and ratepayers on matters which do not concern specific council services.
General purpose funding To collect revenue to allow for the provision of services.	Rates, general purpose government grants and interest revenue.
Law, order, public safety To provide services to help ensure a safer and environmentally conscious community.	Supervision and enforcement of various local laws relating to fire prevention and other aspects of public safety including emergency services.
Health To provide an operational framework for environmental and community health.	Inspection of food outlets and their control, and a waste pick-up service at Warburton.
Education and welfare To provide services to children and youth.	Nil.
Housing To provide and maintain staff housing.	Provision and maintenance of staff housing.
Community amenities To provide services required by the community.	Rubbish collection services and litter control in Warburton.
Recreation and culture To establish and effectively manage infrastructure and resources which will help the social well being of the community.	Maintenance of public halls, civic centre, aquatic centre, recreation centres and various sporting facilities. Provision and maintenance of parks and playgrounds. Operation of other cultural facilities.
Transport To provide safe, effective and efficient transport services to the community.	Construction and maintenance of roads, streets, footpaths, depots and traffic control. Cleaning of streets and maintenance of street trees.
Economic services To help promote the Shire and it's economic wellbeing.	Tourism and area promotion, and building control.
Other property and services To monitor and control council's overheads operating accounts.	Private works operation, plant repair and operation costs and administrative costs.

SHIRE OF NGAANYATJARRAKU
NOTES TO AND FORMING PART OF THE FINANCIAL REPORT
FOR THE YEAR ENDED 30 JUNE 2022

20. FUNCTION AND ACTIVITY (Continued)

(b) Income and expenses

	2022 Actual	2022 Budget	2021 Actual
	\$	\$	\$
Income excluding grants, subsidies and contributions			
Governance	274,220	2,250	50,016
General purpose funding	250,703	214,632	206,572
Law, order, public safety	2,439	426	2,289
Health	0	320	2,267
Education and welfare	112,401	102,000	102,857
Housing	201,857	140,000	180,418
Community amenities	31,728	29,720	71,520
Recreation and culture	261,621	185,000	217,577
Transport	76,862	15,000	95,509
Economic services	3,530	1,000	0
	1,215,361	690,348	929,025
Grants, subsidies and contributions			
Governance	0	2,000	1,991
General purpose funding	3,711,572	1,493,336	3,261,033
Community amenities	99,405	99,405	0
Recreation and culture	63,926	0	30,994
Transport	6,799,811	6,947,387	5,128,459
	10,674,714	8,542,128	8,422,477
Total Income	11,890,075	9,232,476	9,351,502
Expenses			
Governance	(178,213)	(179,729)	(320,659)
General purpose funding	(8)	(1,500)	(4,497)
Law, order, public safety	(8,525)	(41,975)	(5,744)
Health	(205,341)	(220,831)	(252,815)
Education and welfare	(46,996)	(61,278)	(37,230)
Housing	(258,012)	(459,641)	(241,645)
Community amenities	(232,428)	(526,099)	(266,648)
Recreation and culture	(514,085)	(747,825)	(539,429)
Transport	(4,147,117)	(5,470,927)	(3,955,641)
Economic services	(162,493)	(313,455)	(52,474)
Other property and services	(14,254)	0	0
Total expenses	(5,767,472)	(8,023,260)	(5,676,782)
Net result for the period	6,122,603	1,209,216	3,674,720

SHIRE OF NGAANYATJARRAKU
NOTES TO AND FORMING PART OF THE FINANCIAL REPORT
FOR THE YEAR ENDED 30 JUNE 2022

20. FUNCTION AND ACTIVITY (Continued)

(c) Fees and Charges

	2022 Actual	2022 Budget	2021 Actual
	\$	\$	\$
Governance	1,000	250	500
Health	0	320	330
Education and welfare	112,400	102,000	102,857
Housing	201,857	140,000	180,418
Community amenities	31,728	29,720	71,520
Recreation and culture	261,621	160,000	187,856
Economic services	3,530	1,000	0
	612,136	433,290	543,481

(d) Total Assets

	2022	2021
	\$	\$
Governance	622,011	477,991
Law, order, public safety	1,301	3,121
Health	53,044	93,523
Education and welfare	1,590,309	1,176,850
Housing	7,220,724	4,469,714
Community amenities	76,179	61,178
Recreation and culture	4,379,394	1,704,057
Transport	110,874,315	106,458,716
Unallocated	10,792,752	9,626,289
	135,610,029	124,071,439

SHIRE OF NGAANYATJARRAKU
NOTES TO AND FORMING PART OF THE FINANCIAL REPORT
FOR THE YEAR ENDED 30 JUNE 2022

21. RATING INFORMATION

(a) General Rates

General Rates													
RATE TYPE		Rate in \$	Number of Properties	2021/22 Actual Rateable Value *	2021/22 Actual Rate Revenue	2021/22 Actual Interim Rates	2021/22 Actual Back Rates	2021/22 Actual Total Revenue	2021/22 Budget Rate Revenue	2021/22 Budget Interim Rate	2021/22 Budget Back Rate	2021/22 Budget Total Revenue	2020/21 Actual Total Revenue
Rate Description	Basis of valuation												
				\$	\$	\$	\$	\$	\$	\$	\$	\$	\$
		0.21	31	881,356	184,355	38,430	3,779	226,564	188,652	(150)	0	188,502	171,609
Sub-Total			31	881,356	184,355	38,430	3,779	226,564	188,652	(150)	0	188,502	171,609
Minimum payment		Minimum \$											
	0	245	4	3,471	980			980	980			980	980
Sub-Total			4	3,471	980	0	0	980	980	0	0	980	980
			35	884,827	185,335	38,430	3,779	227,544	189,632	(150)	0	189,482	172,589
Total amount raised from general rates								227,544				189,482	172,589
* Rateable value is based on the value of properties at the time the rate is raised.													
Total Rates								227,544				189,482	172,589

The entire balance of rates revenue has been recognised at a point in time in accordance with AASB 1058 *Income for not-for-profit entities*.

SHIRE OF NGAANYATJARRAKU
NOTES TO AND FORMING PART OF THE FINANCIAL REPORT
FOR THE YEAR ENDED 30 JUNE 2022

21. RATING INFORMATION (Continued)

(c) Interest Charges & Instalments

Instalment Options	Date Due	Instalment Plan Admin Charge	Instalment Plan Interest Rate	Unpaid Rates Interest Rate
		\$	%	%
Option One				
Single full payment	11/10/2021	0.0	0.00%	7.00%
Option Two				
First instalment	11/10/2021	0.0	0.00%	7.00%
Second instalment	13/12/2021	0.0	0.00%	7.00%
Option Three				
First instalment	11/10/2021	0.0	0.00%	7.00%
Second instalment	13/12/2021	0.0	0.00%	7.00%
Third instalment	14/02/2022	0.0	0.00%	7.00%
Fourth instalment	14/04/2022	0.0	0.00%	7.00%

	2022 Actual	2022 Budget	2021 Actual
	\$	\$	\$
Interest on unpaid rates	901	0	145
	901	0	145

SHIRE OF NGAANYATJARRAKU
NOTES TO AND FORMING PART OF THE FINANCIAL REPORT
FOR THE YEAR ENDED 30 JUNE 2022

22. RATE SETTING STATEMENT INFORMATION

		2021/22 Budget	2020/21
		(30 June 2022)	(30 June 2021)
Note	Carried Forward)	Carried Forward)	Carried Forward
	\$	\$	\$
(a) Non-cash amounts excluded from operating activities			
The following non-cash revenue or expenditure has been excluded from amounts attributable to operating activities within the Rate Setting Statement in accordance with <i>Financial Management Regulation 32</i> .			
Adjustments to operating activities			
Less: Profit on asset disposals	10(b)	(76,471)	(60,572)
Less: Fair value adjustments to financial assets at fair value through profit and loss		(1,998)	0
Add: Loss on disposal of assets	10(b)	7,226	21,610
Add: Depreciation	10(a)	1,822,333	1,642,048
Non-cash movements in non-current assets and liabilities:			
Financial assets at amortised cost		0	(1,869)
Employee benefit provisions		9,760	(4,950)
Non-cash amounts excluded from operating activities		1,760,850	1,596,267
(b) Surplus/(deficit) after imposition of general rates			
The following current assets and liabilities have been excluded from the net current assets used in the Rate Setting Statement in accordance with <i>Financial Management Regulation 32</i> to agree to the surplus/(deficit) after imposition of general rates.			
Adjustments to net current assets			
Less: Reserve accounts	23	(5,577,216)	(4,862,136)
Total adjustments to net current assets		(5,577,216)	(4,862,136)
Net current assets used in the Rate Setting Statement			
Total current assets		11,953,275	10,171,839
Less: Total current liabilities		(1,665,024)	(2,160,283)
Less: Total adjustments to net current assets		(5,577,216)	(4,862,136)
Net current assets used in the Rate Setting Statement		4,711,035	3,149,420

SHIRE OF NGAANYATJARRAKU
NOTES TO AND FORMING PART OF THE FINANCIAL REPORT
FOR THE YEAR ENDED 30 JUNE 2022

23. RESERVE ACCOUNTS

	2022 Actual Opening Balance	2022 Actual Transfer to	2022 Actual Transfer (from)	2022 Actual Closing Balance	2022 Budget Opening Balance	2022 Budget Transfer to	2022 Budget Transfer (from)	2022 Budget Closing Balance	2021 Actual Opening Balance	2021 Actual Transfer to	2021 Actual Transfer (from)	2021 Actual Closing Balance
	\$	\$	\$	\$	\$	\$	\$	\$	\$	\$	\$	\$
Restricted by council												
(a) Employee Entitlement Reserve	311,532	947	0	312,479	311,531	0	0	311,531	309,822	1,710	0	311,532
Asset Replacement, Acquisition												
(b) and Development Reserve	4,093,527	452,743	0	4,546,270	4,093,527	101,656	0	4,195,183	3,522,013	571,514	0	4,093,527
(c) Cultural Centre Reserve	122,077	60,371	0	182,448	122,077	0	0	122,077	7,038	115,039	0	122,077
(d) Strategic Reserve	335,000	201,019	0	536,019	335,000	0	0	335,000	0	335,000	0	335,000
	4,862,136	715,080	0	5,577,216	4,862,135	101,656	0	4,963,791	3,838,873	1,023,263	0	4,862,136

All reserves are supported by cash and cash equivalents and financial assets at amortised cost and are restricted within equity as Reserves - cash/financial assets backed.

In accordance with Council resolutions or adopted budget in relation to each reserve account, the purpose for which the reserves are set aside and their anticipated date of use are as follows:

Name of Reserve	Anticipated date of use	Purpose of the reserve
(a) Employee Entitlement Reserve	Ongoing	Established to fund a portion of future commitments for employee entitlements incurred as a result of employing staff and workers in relation to leave entitlements.
Asset Replacement, Acquisition	Ongoing	To provide and replace the necessary equipment, furniture, plant, buildings and infrastructure comprising of roads, drains, footpaths and recreational reserves.
(b) and Development Reserve	Ongoing	To provide for the successful operation of the Cultural Centre as provided for in clause 8.2 of the management deed between the Shire of Ngaanyatjarraku, Warburton Community Incorporated and the Ngaanyatjarra Council (Aboriginal Corporation), transfers to the reserve represent surplus funds from the day to day operations of the Cultural Centre after deducting costs incurred by the Shire.
(c) Cultural Centre Reserve	Ongoing	
(d) Strategic Reserve	Ongoing	To provide for the reduction of financial risk of unanticipated events in the occurrence of a natural disaster. To provide for strategic actions in support of identified activities that cannot be funded in the one budget period. To provide for the capacity to take-up unanticipated strategic opportunities.



Auditor General

INDEPENDENT AUDITOR'S REPORT 2022

Shire of Ngaanyatjarraku

To the Councillors of the Shire of Ngaanyatjarraku

Opinion

I have audited the financial report of the Shire of Ngaanyatjarraku (Shire) which comprises:

- the Statement of Financial Position at 30 June 2022, the Statement of Comprehensive Income by Nature or Type, Statement of Changes in Equity, Statement of Cash Flows and Rate Setting Statement for the year then ended
- Notes comprising a summary of significant accounting policies and other explanatory information.

In my opinion, the financial report is:

- based on proper accounts and records
- presents fairly, in all material respects, the results of the operations of the Shire for the year ended 30 June 2022 and its financial position at the end of that period
- in accordance with the *Local Government Act 1995* (the Act) and, to the extent that they are not inconsistent with the Act, Australian Accounting Standards.

Basis for opinion

I conducted my audit in accordance with Australian Auditing Standards. My responsibilities under those standards are further described in the Auditor's responsibilities for the audit of the financial report section below.

I believe that the audit evidence I have obtained is sufficient and appropriate to provide a basis for my opinion.

Other information

The Chief Executive Officer (CEO) is responsible for the preparation and the Council for overseeing the other information. The other information is the information in the entity's annual report for the year ended 30 June 2022, but not the financial report and my auditor's report.

My opinion on the financial report does not cover the other information and, accordingly, I do not express any form of assurance conclusion thereon.

In connection with my audit of the financial report, my responsibility is to read the other information and, in doing so, consider whether the other information is materially inconsistent with the financial report or my knowledge obtained in the audit or otherwise appears to be materially misstated.

If, based on the work I have performed, I conclude that there is a material misstatement of this other information, I am required to report that fact. I did not receive the other information prior to the date of this auditor's report. When I do receive it, I will read it and if I conclude that there is a material misstatement in this information, I am required to communicate the matter to the CEO and Council and request them to correct the misstated information. If the misstated information is not corrected, I may need to retract this auditor's report and re-issue an amended report.

Responsibilities of the Chief Executive Officer and Council for the financial report

The Chief Executive Officer of the Shire is responsible for:

- preparation and fair presentation of the financial report in accordance with the requirements of the Act, the Regulations and Australian Accounting Standards
- managing internal control as required by the CEO to ensure the financial report is free from material misstatement, whether due to fraud or error.

In preparing the financial report, the CEO is responsible for:

- assessing the Shire's ability to continue as a going concern
- disclosing, as applicable, matters related to going concern
- using the going concern basis of accounting unless the State Government has made decisions affecting the continued existence of the Shire.

The Council is responsible for overseeing the Shire's financial reporting process.

Auditor's responsibilities for the audit of the financial report

As required by the *Auditor General Act 2006*, my responsibility is to express an opinion on the financial report. The objectives of my audit are to obtain reasonable assurance about whether the financial report as a whole is free from material misstatement, whether due to fraud or error, and to issue an auditor's report that includes my opinion. Reasonable assurance is a high level of assurance but is not a guarantee that an audit conducted in accordance with Australian Auditing Standards will always detect a material misstatement when it exists.

Misstatements can arise from fraud or error and are considered material if, individually or in the aggregate, they could reasonably be expected to influence the economic decisions of users taken on the basis of the financial report. The risk of not detecting a material misstatement resulting from fraud is higher than for one resulting from error, as fraud may involve collusion, forgery, intentional omissions, misrepresentations or the override of internal control.

A further description of my responsibilities for the audit of the financial report is located on the Auditing and Assurance Standards Board website. This description forms part of my auditor's report and can be found at https://www.auasb.gov.au/auditors_responsibilities/ar4.pdf.

My independence and quality control relating to the report on the financial report

I have complied with the independence requirements of the *Auditor General Act 2006* and the relevant ethical requirements relating to assurance engagements. In accordance with ASQC 1 *Quality Control for Firms that Perform Audits and Reviews of Financial Reports and Other Financial Information, and Other Assurance Engagements*, the Office of the Auditor General maintains a comprehensive system of quality control including documented policies and procedures regarding compliance with ethical requirements, professional standards and applicable legal and regulatory requirements.

Matters relating to the electronic publication of the audited financial report

This auditor's report relates to the financial report of the Shire of Ngaanyatjaraku for the year ended 30 June 2022 included in the annual report on the Shire's website. The Shire's management is responsible for the integrity of the Shire's website. This audit does not provide assurance on the integrity of the Shire's website. The auditor's report refers only to the financial report. It does not provide an opinion on any other information which may have been hyperlinked to/from the annual report. If users of the financial report are concerned with the inherent risks arising from publication on a website, they are advised to contact the Shire to confirm the information contained in the website version.



Jordan Langford-Smith
Senior Director Financial Audit
Delegate of the Auditor General for Western Australia
Perth, Western Australia
16 December 2022